

The collection

2023

ADEZZ
DESIGN TO GROW



Preface

We are proud to present the new ADEZZ. More focus, fewer brands. We are combining the products of DIPOTT and One To Sit into one, the ADEZZ brand. With a new corporate identity, clearer portfolio and new product names. These changes will help you enrich your customer's outdoor experience with our wide range of products. Together we are aiming for the best results. But not everything changes: our quality and service remain the same!

We have been producing and selling the most beautiful garden products since 2009. Our products enable you to make a difference for your customers. Our company has grown steadily since day one into the reliable partner we are today and will continue to be.

Outdoor time spend has taken off in recent years and is becoming an increasingly important part of our daily activities. With our products you create the atmosphere in which customers can relax and enjoy their garden. As a result, your gardening work will leverage at its best and you invariably put a smile on the customer's face during delivery. We design and produce all our products ourselves. As a result, we can always guarantee the top quality that you have come to expect from us at the best possible prices. Everything is manufactured in Europe with the greatest care, so that we are sure that the products meet our standards. We also keep a large stock, which allows us to deliver quickly.

ADEZZ products enable you to take care of the complete furnishing and decoration of your customers' living or outdoor space. The strength for you as a green professional lies in the endless possibilities you have to combine our products from the different categories for projects at hand. We use the same quality materials, finish and styles so that the products match each other.

Development ADEZZ GROUP

Below we show you the path we have walked with Adezz since its foundation 9 years after the turn of the century.

2009

ADEZZ

Our ADEZZ label includes a wide variety of superior quality garden products. Because we design all the products ourselves, we are able to provide contemporary and timeless products that enhance any garden. For example, we offer planters in several materials; Corten steel, aluminium, Fibreglass, polymer concrete and hardwood.

Origination of Adezz

Mandenmakerstraat, Uden

Production of Fibreglass planters in Reek

Production of wooden planters in Veghel

2014

VERTUSS

Walls and partitions have become an integral part of a garden design, as opposed to the formerly horizontally-oriented garden layout. With VERTUSS, we help to green walls with our vertical garden systems. Vertical greenery not only adds value to the building, but it also improves air quality, oxygen production and climate control in your familiar learning, working or living environment.

With VERTUSS, we focus on systems that promote nature-inclusive construction. A degree of greenery is attainable within any given budget, thanks to our modular systems.

Focus on exploitation and processes

2010

Start of Fibreglass production, Poland

2011

Opening of an extra warehouse Frontstraat, Uden

2012

FORNO

Since 2012, ADEZZ has produced a wide range of fire-oriented products in-house under the FORNO label for the landscaper/ gardener, such as; garden fireplaces, outdoor kitchens and wood storage units. Our expertise lies in making high quality products that provide a warm outdoor ambience. This durable Dutch quality product is sure to add value to your garden design.

Expansion of the steel production on a new location, Poland

2016

FURNS

FURNS was founded because the projects to which ADEZZ delivers continued to grow in size and increasingly these ended up in public spaces. With FURNS, the experiences, qualities and specialist crafts of the past have been merged to focus fully on public spaces. We utilise durable materials that can withstand weather and vandalism. This is essential in outdoor spaces. FURNS has been supplying robust outdoor materials in various climates for many years. Our project managers are happy to proactively jump on board with you and your client to consider the applications of our furniture, to help perfect your project together.

With stunning, timeless designs, all our products can be beautifully combined. As a result, FURNS products can also be of immense added value for larger garden and park projects. For instance, projects in sports, culture and hospitality areas.

2017

Opening a new warehouse and offices on a new location
Liessentstraat, Uden

2019

DIPOTT

Versatile production capabilities gave ADEZZ's designers more scope to design unique products. These premium planters and pots deserve to be showcased, which we have brought about, under the brand name DIPOTT. The high-end designs under this label are sold exclusively via green professionals. Stand out even more with these products, and give each project a distinctive look&feel.

Forse uitbreiding extern poedercoaten

2023

2018

ONE TO SIT

Our range of exclusive garden furniture is best described as rugged, pure, timeless and impactful; one that is suitable for both indoor and outdoor spaces. The complete collection is made of honest, sustainable materials and is finished down to the finest detail. feat of pure Dutch design and craftsmanship.

2020

Expansion of our warehouse Liessentstraat, Uden

2021

Relocation of steel production, The Netherlands, to a larger location
Kraaiendonk, Venhorst

2022

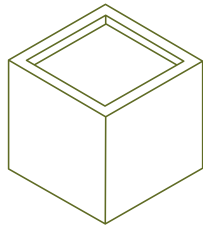
Expansion of the production Expansion of machines

Integration of the ADEZZ Group

Relocation of steel production, Poland



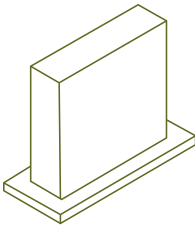
Index



PLANTERS
11 - 119



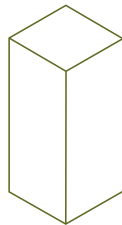
WATER ELEMENTS
121 - 149



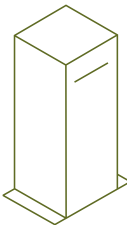
WALLS
151 - 157



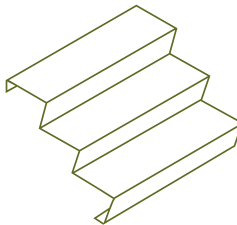
PANELS
159 - 165



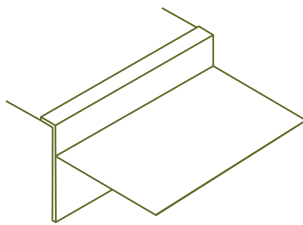
PEDESTALS
167 - 175



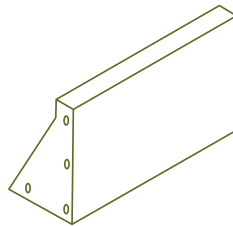
LETTERBOXES
177 - 197



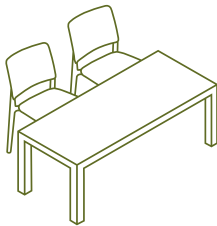
STAIRS
199 - 205



EDGING
207 - 219



RETAINING WALLS
221 - 233



FURNITURE
235 - 265

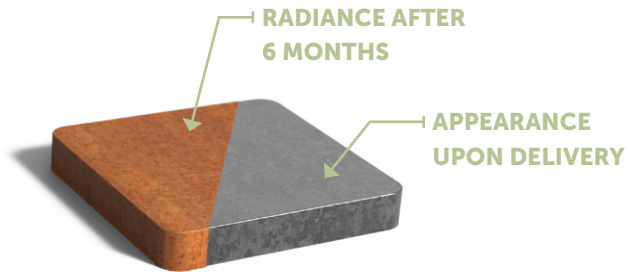
Materials

Within the ADEZZ collection we use a number of Standard materials for the collection.

Corten steel

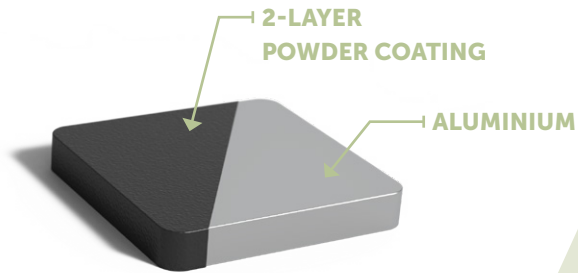
The Corten steel material has an orange-brown color, which is formed by a natural layer of rust. Another name for Corten steel is weathering steel: weather conditions have a positive influence on this material.

Corten steel is a metal alloy consisting of iron, to which copper, phosphorus, silicon, nickel and chromium have been added. When exposed to the outside air, the material is covered with a protective layer of rust. This natural rust layer forms the protection against further corrosion. As a result, Corten steel products have a long lifespan.



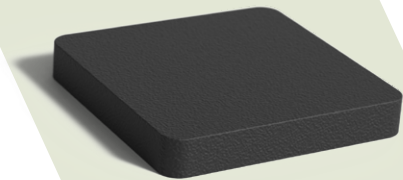
Aluminium

Aluminium is corrosion resistant and can therefore be left outside all year round. The material will not be harmed by the weather. After the aluminium product has been produced, it is powder coated with a strong adhesive primer. It is then finished with a scratch-resistant colour coating.



Fibreglass

Our Fibreglass products are made of high-quality reinforced Fibreglass. This is a sturdy material. It won't tear because reinforcements are also put in the corners. In addition, our products are coloured through and through, which ensures that they also retain their colour well.



Fibreglass glossy

Our Fibreglass products are made of high-quality reinforced Fibreglass. This is a sturdy material. It won't tear because reinforcements are also put in the corners. In addition, our products are coloured through and through, which ensures that they also retain their colour well. The "glossy" finish provides a very smooth material, which is also easy to clean.



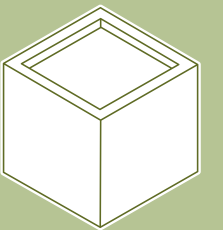
Hardwood

With the use of hardwood we give our products a natural look. All our hardwood has durability class 2 and lasts up to 25 years. The wood doesn't require any treatment due to this high durability class. The wood will wear over time into a natural greying effect. This does not affect the quality.





Planters





CARREZ

This planter with square corners looks great in gardens with clean lines. The sleek, double-turned edge gives it a sturdy appearance. The CARREZ is also ideal for use as a divider in hospitality venues.

OPTIONS



WATERPROOF



CUSTOM MADE





Corten steel

The CARREZ corten steel planter will add warmth and boldness to any garden, thanks to the orange-brown patina on the metal. This patina is formed by a natural layer of rust. Another name for corten steel is weathering steel: weather conditions have a positive effect on this planter.

Corten steel is a metal alloy made by adding copper, phosphorus, silicon, nickel and chromium to steel. When exposed to air, the material forms a protective layer of rust. This natural coating prevents further corrosion, extending the planter's life.



CARREZ

DESCRIPTION	STANDARD
Top Edge	50 x 25 mm
Material thickness	2 mm
Feet	15 mm
Drainage holes	ø 27 mm



				KG
CA1.1	2000	2000	800	180
CA1.2	2000	2000	600	151
CA1.3	2000	2000	400	124
CA3.1	1400	1400	800	110
CA3.2	1400	1400	600	92
CA3.3	1400	1400	400	73
CA4.1	1200	1200	800	91
CA4.2	1200	1200	600	75
CA4.3	1200	1200	400	57
CA5	1000	1000	1000	86
CA5.1	1000	1000	800	73
CA5.2	1000	1000	600	59
CA5.3	1000	1000	400	44
CA6.1	800	800	800	56
CA6.2	800	800	600	45
CA6.3	800	800	400	33
CA7	700	700	700	41
CA8	600	600	600	30
CA9	500	500	500	21
CA9.1	500	500	800	30
CA9.2	500	500	1000	37
CA10	400	400	400	14
CA10.1	400	400	600	19
CA10.2	400	400	800	24
CA10.3	400	400	1000	29



CARREZ

DESCRIPTION	STANDARD
Top Edge	50 x 25 mm
Material thickness	2 mm
Feet	15 mm
Drainage holes	ø 27 mm



				KG
CA20.1	2000	1000	600	97
CA20.2	2000	1000	400	74
CA22	2000	500	600	70
CA22.1	1500	500	600	54
CA22.2	1200	500	600	46
CA22.3	900	500	600	37
CA23	2000	500	500	61
CA23.1	1500	500	500	48
CA23.2	1200	500	500	40
CA23.3	1000	500	500	35
CA24	2000	400	800	79
CA24.1	1500	400	800	62
CA24.2	1200	400	800	52
CA24.3	1000	400	800	45
CA24.4	800	400	800	39
CA25	2000	400	400	47
CA25.1	1500	400	400	37
CA25.2	1200	400	400	30
CA25.3	1000	400	400	26
CA25.4	800	400	400	22
CA26.2	900	300	800	38



CARREZ WITHOUT BASE

DESCRIPTION	STANDARD
Top Edge	50 x 25 mm
Material thickness	2 mm



				KG
CAW1.1	2000	2000	800	128
CAW1.2	2000	2000	600	101
CAW1.3	2000	2000	400	72
CAW3.1	1400	1400	800	90
CAW3.2	1400	1400	600	66
CAW3.3	1400	1400	400	46
CAW4.1	1200	1200	800	73
CAW4.2	1200	1200	600	57
CAW4.3	1200	1200	400	41
CAW5.1	1000	1000	800	60
CAW5.2	1000	1000	600	47
CAW5.3	1000	1000	400	33
CAW6.1	800	800	800	49
CAW6.2	800	800	600	38
CAW6.3	800	800	400	25



CARREZ WITHOUT BASE

DESCRIPTION	STANDARD
Top Edge	50 x 25 mm
Material thickness	2 mm



				KG
CAW20.1	2000	1000	600	74
CAW20.2	2000	1000	400	51



CARREZ WITH FEET

DESCRIPTION	STANDARD
Top Edge	50 x 25 mm
Material thickness	2 mm
Feet	90 mm
Drainage holes	ø 27 mm



				KG
CAP3.1	1400	1400	800	105
CAP4.1	1200	1200	800	87
CAP4.2	1200	1200	600	71
CAP5.1	1000	1000	800	71
CAP5.2	1000	1000	600	57
CAP6.1	800	800	800	54
CAP6.2	800	800	600	43
CAP7	700	700	700	39
CAP8	600	600	600	29



CARREZ WITH FEET

DESCRIPTION	STANDARD
Top Edge	50 x 25 mm
Material thickness	2 mm
Feet	90 mm
Drainage holes	ø 27 mm



				KG
CAP22	2000	500	600	66
CAP22.1	1500	500	600	52
CAP22.2	1200	500	600	44
CAP24.2	1200	400	800	51
CAP24.3	1000	400	800	45



CARREZ WITH WHEELS

DESCRIPTION	STANDARD
Top Edge	50 x 25 mm
Material thickness	2 mm



				KG
CAWL4.2	1200	1200	600	81
CAWL4.3	1200	1200	400	65
CAWL5.1	1000	1000	800	78
CAWL5.2	1000	1000	600	65
CAWL5.3	1000	1000	400	51
CAWL6.1	800	800	800	61
CAWL6.2	800	800	600	50
CAWL6.3	800	800	400	39
CAWL7	700	700	700	45
CAWL8	600	600	600	34
CAWL9	500	500	500	24
CAWL9.1	500	500	800	34
CAWL22	2000	500	600	74
CAWL22.1	1500	500	600	58
CAWL22.2	1200	500	600	49
CAWL22.3	900	500	600	40
CAWL23	2000	500	500	65
CAWL23.1	1500	500	500	51
CAWL23.2	1200	500	500	43
CAWL23.3	1000	500	500	38

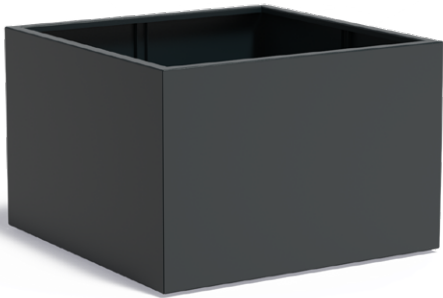




Aluminium

The CARREZ aluminium planter gives gardens a timeless look. The planter is corrosion resistant. By default, it is not waterproof. Aluminium is very lightweight. The aluminium planter can be left outside all year round without damage, even in freezing temperatures. That means that this you will enjoy this planter for many years.

Once constructed, the planter is given several finishing treatments. The metal is roughened to allow better adhesion of the powder coating. This powder coating is available in a variety of colours and is applied with a strong adhesive primer. Finally, the planter is finished with a hard topcoat. This ensures that the CARREZ aluminium planter is scratch resistant.



CARREZ

DESCRIPTION	STANDARD
Top Edge	50 x 25 mm
Material thickness	3 mm
Feet	15 mm
Drainage holes	ø 27 mm



				KG
AF1.2	2000	2000	600	81
AF1.3	2000	2000	400	67
AF3.1	1400	1400	800	59
AF3.2	1400	1400	600	49
AF3.3	1400	1400	400	37
AF4.1	1200	1200	800	47
AF4.2	1200	1200	600	39
AF4.3	1200	1200	400	30
AF5	1000	1000	1000	45
AF5.1	1000	1000	800	38
AF5.2	1000	1000	600	31
AF5.3	1000	1000	400	23
AF6.1	800	800	800	29
AF6.2	800	800	600	24
AF6.3	800	800	400	17
AF7	700	700	700	21
AF8	600	600	600	16
AF9	500	500	500	11
AF9.1	500	500	800	16
AF9.2	500	500	1000	19
AF10	400	400	400	7
AF10.1	400	400	600	10
AF10.2	400	400	800	12
AF10.3	400	400	1000	15



CARREZ

DESCRIPTION	STANDARD
Top Edge	50 x 25 mm
Material thickness	3 mm
Feet	15 mm
Drainage holes	ø 27 mm



				KG
AF20.1	2000	1000	600	52
AF20.2	2000	1000	400	40
AF22	2000	500	600	37
AF22.1	1500	500	600	28
AF22.2	1200	500	600	24
AF22.3	900	500	600	19
AF23	2000	500	500	33
AF23.1	1500	500	500	25
AF23.2	1200	500	500	21
AF23.3	1000	500	500	18
AF24	2000	400	800	43
AF24.1	1500	400	800	32
AF24.2	1200	400	800	27
AF24.3	1000	400	800	24
AF24.4	800	400	800	20
AF25	2000	400	400	25
AF25.1	1500	400	400	20
AF25.2	1200	400	400	16
AF25.3	1000	400	400	14
AF26.2	900	300	800	20



CARREZ WITHOUT BASE

DESCRIPTION	STANDARD
Top Edge	50 x 25 mm
Material thickness	3 mm



				KG
AFW1.2	2000	2000	600	52
AFW1.3	2000	2000	400	37
AFW3.1	1400	1400	800	47
AFW3.2	1400	1400	600	36
AFW3.3	1400	1400	400	24
AFW4.1	1200	1200	800	38
AFW4.2	1200	1200	600	30
AFW4.3	1200	1200	400	20
AFW5.1	1000	1000	800	31
AFW5.2	1000	1000	600	24
AFW5.3	1000	1000	400	16
AFW6.1	800	800	800	25
AFW6.2	800	800	600	20
AFW6.3	800	800	400	13



CARREZ WITHOUT BASE

DESCRIPTION	STANDARD
Top Edge	50 x 25 mm
Material thickness	3 mm



				KG
AFW20.1	2000	1000	600	39
AFW20.2	2000	1000	400	26



CARREZ WITH FEET

DESCRIPTION	STANDARD
Top Edge	50 x 25 mm
Material thickness	3 mm
Feet	90 mm
Drainage holes	ø 27 mm



				KG
AFP3.1	1400	1400	800	55
AFP4.1	1200	1200	800	46
AFP4.2	1200	1200	600	37
AFP5.1	1000	1000	800	37
AFP5.2	1000	1000	600	30
AFP6.1	800	800	800	28
AFP6.2	800	800	600	23
AFP7	700	700	700	22
AFP8	600	600	600	15



CARREZ WITH FEET

DESCRIPTION	STANDARD
Top Edge	50 x 25 mm
Material thickness	3 mm
Feet	90 mm
Drainage holes	ø 27 mm



				KG
AFP22	2000	500	600	35
AFP22.1	1500	500	600	28
AFP22.2	1200	500	600	23
AFP24.2	1200	400	800	26
AFP24.3	1000	400	800	23



CARREZ WITH WHEELS

DESCRIPTION	STANDARD
Top Edge	50 x 25 mm
Material thickness	3 mm



				KG
AFWL4.2	1200	1200	600	43
AFWL4.3	1200	1200	400	34
AFWL5.1	1000	1000	800	41
AFWL5.2	1000	1000	600	34
AFWL5.3	1000	1000	400	27
AFWL6.1	800	800	800	32
AFWL6.2	800	800	600	27
AFWL6.3	800	800	400	21
AFWL7	700	700	700	26
AFWL8	600	600	600	18
AFWL9	500	500	500	13
AFWL9.1	500	500	800	18
AFWL22	2000	500	600	40
AFWL22.1	1500	500	600	32
AFWL22.2	1200	500	600	26
AFWL22.3	900	500	600	22
AFWL23	2000	500	500	35
AFWL23.1	1500	500	500	29
AFWL23.2	1200	500	500	23
AFWL23.3	1000	500	500	21





Hardwood

The CARREZ hardwood planter gives gardens a robust and warm look. This planter is made of tropical hardwood. All our hardwood is classified as durability class 2 and will last up to 25 years. The use of hardwood creates a planter that blends beautifully with the lush greenery of the garden environment.

Due to the high durability class of the wood, this hardwood planter needs no further treatment. The planter will turn grey over time. This colour change does not affect the quality of the planter. The planter is constructed using only high-quality stainless-steel fasteners, and the base is lined with an anti-root membrane.



CARREZ

DESCRIPTION	STANDARD
Top Edge	21 mm
Material thickness	21 mm
Feet	20 mm



				KG
HS3	1400	1400	713	115
HS4.1	1200	1200	713	96
HS4.2	1200	1200	574	84
HS4.3	1200	1200	435	60
HS5.1	1000	1000	713	80
HS5.2	1000	1000	574	70
HS5.3	1000	1000	435	49
HS6.1	800	800	713	62
HS6.2	800	800	574	54
HS6.3	800	800	435	37
HS8	600	600	574	43
HS10	400	400	435	20



CARREZ

DESCRIPTION	STANDARD
Top Edge	21 mm
Material thickness	21 mm
Feet	20 mm



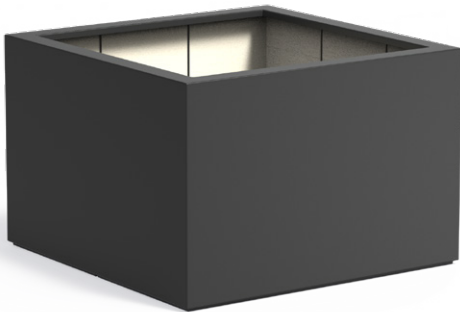
				KG
HS22	2000	500	574	83
HS22.1	1500	500	574	67
HS22.2	1200	500	574	59
HS24	2000	400	713	90
HS24.1	1500	400	713	73
HS24.2	1200	400	713	64
HS24.3	1000	400	713	57
HS25	2000	400	435	54
HS25.1	1500	400	435	43
HS25.2	1200	400	435	38
HS25.3	1000	400	435	33



Fibreglass

The CARREZ Fibreglass planter gives gardens a modern look. The Fibreglass planter is intended for outdoor use. By default, it is not waterproof. The planter is supplied in two standard colours. Other colours can be ordered for an additional cost, so there is a CARREZ Fibreglass planter to match every design scheme.

Our Fibreglass planter is made of high-quality reinforced Fibreglass. This makes the planter sturdy. The reinforcement has been extended into the corners, which prevents splitting. The Fibreglass is dyed through, and the planter will retain its colour.



CARREZ

DESCRIPTION	STANDARD
Top Edge	40-85 x 25 mm
Material thickness	3 mm
Feet	-
Drainage holes	-



				KG
PB1.2	2000	2000	600	48
PB1.3	2000	2000	400	40
PB2.2	1600	1600	600	36
PB3.2	1400	1400	600	30
PB3.3	1400	1400	400	24
PB4	1200	1200	1000	34
PB4.1	1200	1200	800	29
PB4.2	1200	1200	600	24
PB4.3	1200	1200	400	19
PB5	1000	1000	1000	27
PB5.1	1000	1000	800	23
PB5.2	1000	1000	600	19
PB5.3	1000	1000	400	15
PB6.1	800	800	800	18
PB6.2	800	800	600	14
PB6.3	800	800	400	11
PB7	700	700	700	14
PB8	600	600	600	10
PB9	500	500	500	7
PB9.1	500	500	800	10
PB9.2	500	500	1000	12
PB10	400	400	400	5
PB10.1	400	400	600	6
PB10.2	400	400	800	8
PB10.3	400	400	1000	9
PB10.4	400	400	1200	11

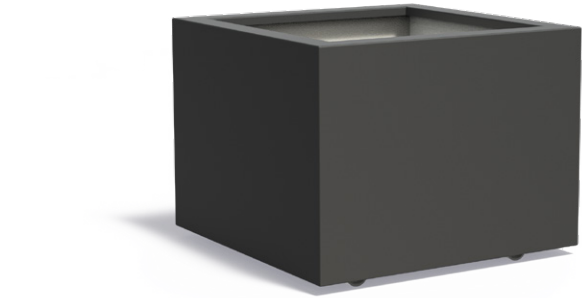


CARREZ

DESCRIPTION	STANDARD
Top Edge	40-85 x 25 mm
Material thickness	3 mm
Feet	-
Drainage holes	-



				KG
PB20.1	2000	1000	600	31
PB20.2	2000	1000	400	25
PB21	2300	500	400	19
PB22	2000	500	600	22
PB22.1	1500	500	600	17
PB22.2	1200	500	600	15
PB22.3	900	500	600	12
PB23	2000	500	500	19
PB23.1	1500	500	500	15
PB23.2	1200	500	500	13
PB23.3	1000	500	500	11
PB24	2000	400	800	25
PB24.1	1500	400	800	19
PB24.2	1200	400	800	16
PB24.3	1000	400	800	14
PB24.4	800	400	800	12
PB25	2000	400	400	15
PB25.1	1500	400	400	12
PB25.2	1200	400	400	10
PB25.3	1000	400	400	9
PB25.4	800	400	400	7
PB25.5	600	400	400	6
PB28	1500	250	800	17
PB28.2	900	250	800	11



CARREZ WITH WHEELS

DESCRIPTION	STANDARD
Top Edge	50 x 25 mm
Material thickness	3 mm



				KG
PBWL6.1	800	800	800	18
PBWL6.2	800	800	600	14
PBWL6.3	800	800	400	11
PBWL7	700	700	700	14
PBWL8	600	600	600	10
PBWL9	500	500	500	7
PBWL9.1	500	500	800	10
PBWL22	2000	500	600	22
PBWL22.1	1500	500	600	17
PBWL22.2	1200	500	600	15
PBWL22.3	900	500	600	12
PBWL23	2000	500	500	19
PBWL23.1	1500	500	500	15
PBWL23.2	1200	500	500	13
PBWL23.3	1000	500	500	11



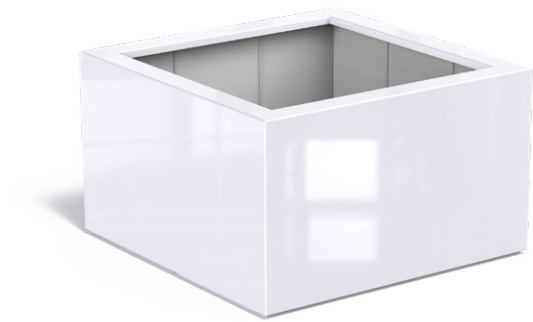


Fibreglass glossy

The CARREZ Fibreglass planter gives gardens a modern look. The ‘glossy’ finish gives the planter a smooth and stylish appeal. The Fibreglass planter is intended for outdoor use. By default, it is not waterproof.

Our Fibreglass planter is made of high-quality reinforced Fibreglass. This makes the planter sturdy. The reinforcement has been extended


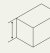
into the corners, which prevents splitting. The Fibreglass is dyed through, and the planter will retain its colour. The ‘glossy’ finish gives the planter a smooth and stylish appeal.



CARREZ

DESCRIPTION	STANDARD
Top Edge	40-85 x 25 mm
Material thickness	3 mm
Feet	-
Drainage holes	-



				KG
PBH5.1	1000	1000	800	23
PBH5.2	1000	1000	600	19
PBH6.1	800	800	800	18
PBH6.2	800	800	600	14
PBH7	700	700	700	14
PBH8	600	600	600	10
PBH9	500	500	500	7
PBH10	400	400	400	4
PBH10.1	400	400	600	6
PBH10.2	400	400	800	8
PBH10.3	400	400	1000	9
PBH10.4	400	400	1200	11
PBH22.1	1500	500	600	17
PBH22.2	1200	500	600	14
PBH25.3	1000	400	400	8
PBH28.2	900	250	800	11



CIRCUM

The CIRCUM planter is characterised by its round shape. It's available in corten steel, aluminium, and Fibreglass. This cylindrical planter brings gardens to life even more!

OPTIONS



WATERPROOF



CUSTOM MADE





Corten steel

The CIRCUM corten steel planter gives gardens a bold, stylish and warm look, thanks to the orange-brown patina on the metal. This patina is formed by a natural layer of rust. Another name for corten steel is weathering steel: weather conditions have a positive effect on this planter.

Corten steel is a metal alloy made by adding copper, phosphorus, silicon, nickel and chromium to steel. When exposed to air, the material forms a protective layer of rust. This natural coating prevents further corrosion, extending the planter's life.



CIRCUM

DESCRIPTION	STANDARD
Top Edge	50 x 25 mm
Material thickness	2 mm
Feet	15 mm
Drainage holes	ø 27 mm



			KG
CT1.1	2000	800	134
CT1.2	2000	600	114
CT1.3	2000	400	95
CT2.1	1500	800	91
CT2.2	1500	600	76
CT2.3	1500	400	61
CT4.1	1200	800	68
CT4.2	1200	600	56
CT4.3	1200	400	45
CT5.1	1000	800	55
CT5.2	1000	600	45
CT5.3	1000	400	35
CT6.1	800	800	42
CT6.2	800	600	34
CT6.3	800	400	26
CT8	600	600	24
CT8.1	600	800	30
CT8.2	600	1000	35
CT8.3	600	1200	41



CIRCUM WITHOUT BASE

DESCRIPTION	STANDARD
Top Edge	50 x 25 mm
Material thickness	2 mm



			KG
CTW1.2	2000	600	72
CTW1.3	2000	400	53
CTW2.2	1500	600	54
CTW2.3	1500	400	39
CTW4.2	1200	600	43
CTW4.3	1200	400	31
CTW5.2	1000	600	36
CTW5.3	1000	400	26



CIRCUM WITH FEET

DESCRIPTION	STANDARD
Top Edge	50 x 25 mm
Material thickness	3 mm
Feet	105 mm
Drainage holes	ø 27 mm



			KG
CTP1.1	2000	800	210
CTP2.1	1500	800	141
CTP4.1	1200	800	107
CTP5.1	1000	800	84





Aluminium

The CIRCUM aluminium planter gives gardens a bold and timeless look. The planter is corrosion resistant. By default, it is not waterproof. Aluminium is very lightweight. The aluminium planter can be left outside all year round without damage, even in freezing temperatures. That means that this you will enjoy this planter for many years.

Once constructed, the planter is given several finishing treatments. The metal is roughened to allow better adhesion of the powder coating. This powder coating is available in a variety of colours and is applied with a strong adhesive primer. Finally, the planter is finished with a hard topcoat. This ensures that the CIRCUM aluminium planter is scratch resistant.



CIRCUM

DESCRIPTION	STANDARD
Top Edge	50 x 25 mm
Material thickness	3 mm
Feet	15 mm
Drainage holes	ø 27 mm



			KG
AM1.2	2000	600	60
AM1.3	2000	400	49
AM2.1	1500	800	47
AM2.2	1500	600	39
AM2.3	1500	400	32
AM4.1	1200	800	35
AM4.2	1200	600	29
AM4.3	1200	400	23
AM5.1	1000	800	28
AM5.2	1000	600	23
AM5.3	1000	400	18
AM6.1	800	800	21
AM6.2	800	600	17
AM6.3	800	400	13
AM8	600	600	12
AM8.1	600	800	15
AM8.2	600	1000	18
AM8.3	600	1200	21

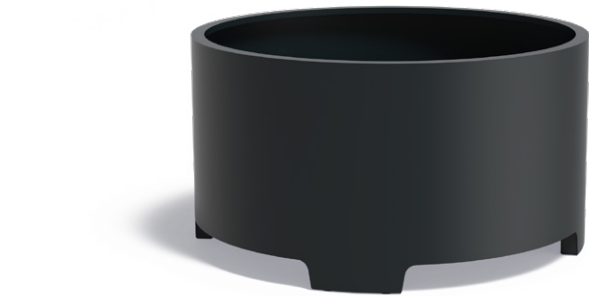


CIRCUM WITHOUT BASE

DESCRIPTION	STANDARD
Top Edge	50 x 25 mm
Material thickness	3 mm



			KG
AMW1.2	2000	600	37
AMW1.3	2000	400	27
AMW2.2	1500	600	28
AMW2.3	1500	400	20
AMW4.2	1200	600	22
AMW4.3	1200	400	16
AMW5.2	1000	600	19
AMW5.3	1000	400	14



CIRCUM WITH FEET

DESCRIPTION	STANDARD
Top Edge	50 x 25 mm
Material thickness	3 mm
Feet	105 mm
Drainage holes	ø 27 mm



			KG
AMP1.1	2000	800	97
AMP2.1	1500	800	65
AMP4.1	1200	800	49
AMP5.1	1000	800	39





Fibreglass

The CIRCUM Fibreglass planter gives gardens a modern look. The Fibreglass planter is intended for outdoor use. By default, it is not waterproof. The planter is supplied in two standard colours. Other colours can be ordered for an additional cost, so there is a matching CIRCUM Fibreglass planter to match every design scheme.

Our Fibreglass planter is made of high-quality reinforced Fibreglass. This makes the planter sturdy. The reinforcement has been extended into the corners, which prevents splitting. The Fibreglass is dyed through, and the planter will retain its colour.

CIRCUM

DESCRIPTION	STANDARD
Top Edge	70 x 25 mm
Material thickness	3 mm
Feet	-
Drainage holes	-



			KG
PJ1	1500	600	25
PJ2	1200	600	19
PJ3	1000	600	15
PJ4	800	600	11



CONIC

This conical planter has a graceful look. Its large size makes the CONIC an excellent choice for placement in parks and other public spaces.

OPTIONS



WATERPROOF



CUSTOM MADE





Corten steel

The CONIC corten steel planter adds a warm and graceful touch to parks and gardens, thanks to the orange-brown patina on the metal. This patina is formed by a natural layer of rust. Another name for corten steel is weathering steel: weather conditions have a positive effect on this planter.

Corten steel is a metal alloy made by adding copper, phosphorus, silicon, nickel and chromium to steel. When exposed to air, the material forms a protective layer of rust. This natural coating prevents further corrosion, extending the planter's life.



CONIC

DESCRIPTION	STANDARD
Top Edge	70 x 30 mm
Material thickness	2 mm
Feet	15 mm
Drainage holes	ø 27 mm



			KG
CC4	1200	1000	71
CC4.1	1200	800	61
CC4.2	1200	600	50
CC5	1000	1000	56
CC5.1	1000	800	48
CC5.2	1000	600	39
CC6	800	1000	42
CC6.1	800	800	35
CC6.2	800	600	29
CC8.1	600	800	26
CC8.2	600	600	20



CONIC WITH FEET

DESCRIPTION	STANDARD
Top Edge	80 x 25 mm
Material thickness	3 mm
Feet	105 mm
Drainage holes	ø 27 mm



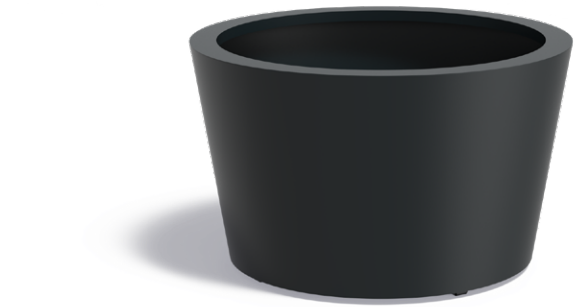
			KG
CCP1.1	2000	800	190
CCP2.1	1500	800	126
CCP4.1	1200	800	92
CCP5.1	1000	800	73



Aluminium

The CONIC aluminium planter gives parks and gardens a graceful and timeless look. The planter is corrosion resistant. By default, it is not waterproof. Aluminium is very lightweight. The aluminium planter can be left outside all year round without damage, even in freezing temperatures. That means that this you will enjoy this planter for many years.

Once constructed, the planter is given several finishing treatments. The metal is roughened to allow better adhesion of the powder coating. This powder coating is available in a variety of colours and is applied with a strong adhesive primer. Finally, the planter is finished with a hard topcoat. This ensures that the CONIC aluminium planter is scratch resistant.



CONIC

DESCRIPTION	STANDARD
Top Edge	70 x 30 mm
Material thickness	3 mm
Feet	15 mm
Drainage holes	ø 27 mm



			KG
AC4	1200	1000	37
AC4.1	1200	800	31
AC4.2	1200	600	26
AC5	1000	1000	29
AC5.1	1000	800	25
AC5.2	1000	600	20
AC6	800	1000	22
AC6.1	800	800	18
AC6.2	800	600	15
AC8.1	600	800	12
AC8.2	600	600	10



CONIC WITH FEET

DESCRIPTION	STANDARD
Top Edge	70 x 25 mm
Material thickness	3 mm
Feet	105 mm
Drainage holes	ø 27 mm



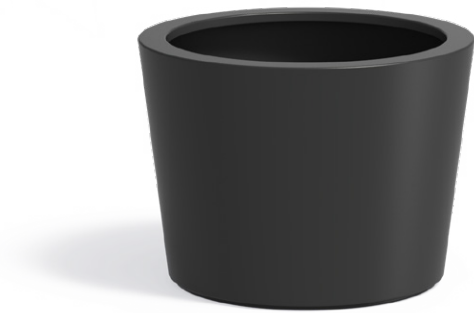
			KG
ACP1.1	2000	800	87
ACP2.1	1500	800	58
ACP4.1	1200	800	42
ACP5.1	1000	800	34



Fibreglass

The CONIC Fibreglass planter gives parks gardens a modern and graceful look. The Fibreglass planter is intended for outdoor use. By default, it is not waterproof. The planter is supplied in two standard colours. Other colours can be ordered for an additional cost, so there is a CONIC Fibreglass planter to match every design scheme.

Our Fibreglass planter is made of high-quality reinforced Fibreglass. This makes the planter sturdy. The reinforcement has been extended into the corners, which prevents splitting. The Fibreglass is dyed through, and the planter will retain its colour.



CONIC

DESCRIPTION	STANDARD
Top Edge	80 x 25 mm
Material thickness	3 mm
Feet	-
Drainage holes	-



			KG
PE1.1	1500	800	20
PE1	1200	800	13
PE2	950	700	9
PE3	890	1000	11
PE4	630	520	5
PE5	550	760	5



ELLIPSE

The ELLIPSE has pleasing curves. The natural shape of this planter will add elegance to any garden.

OPTIONS



WATERPROOF



CUSTOM MADE





Corten steel

The ELLIPSE corten steel planter gives gardens an elegant and warm look, thanks to the orange-brown patina on the metal. This patina is formed by a natural layer of rust. Another name for corten steel is weathering steel: weather conditions have a positive effect on this planter.

Corten steel is a metal alloy made by adding copper, phosphorus, silicon, nickel and chromium to steel. When exposed to air, the material forms a protective layer of rust. This natural coating prevents further corrosion, extending the planter’s life.

Aluminium

The ELLIPSE aluminium planter gives gardens an elegant look. The planter is corrosion resistant. By default, it is not waterproof. Aluminium is very lightweight. The aluminium planter can be left outside all year round without damage, even in freezing temperatures. That means that you can enjoy this planter for many years.

Once constructed, the aluminium planter is given several finishing treatments. The metal is roughened to allow better adhesion of the powder coating. This powder coating is available in a variety of colours and is applied with a strong adhesive primer. Finally, the planter is finished with a hard topcoat. This ensures that the ELLIPSE aluminium planter is scratch resistant.



ELLIPSE

DESCRIPTION	STANDARD	 		
Top Edge	50 x 25 mm			
Material thickness	2 mm			
Feet	15 mm			
Drainage holes	ø 27 mm			

				KG
CEL1	2800	1600	600	198
CEL2	2800	1600	400	160
CEL3	2000	1200	600	129
CEL4	2000	1200	400	100
CEL5	1200	800	600	66
CEL6	1200	800	400	51



ELLIPSE

DESCRIPTION	STANDARD	 		
Top Edge	50 x 25 mm			
Material thickness	3 mm			
Feet	15 mm			
Drainage holes	ø 27 mm			

				KG
AEL1	2800	1600	600	69
AEL2	2800	1600	400	55
AEL3	2000	1200	600	45
AEL4	2000	1200	400	35
AEL5	1200	800	600	23
AEL6	1200	800	400	18



Fibreglass

The ELLIPSE Fibreglass planter gives gardens an elegant look. The Fibreglass planter is intended for outdoor use. By default, it is not waterproof. Optionally, the ELLIPSE planter can be supplied in a waterproof version. The planter is supplied in two standard colours. Other colours can be ordered for an additional charge, so there is a matching ELLIPSE Fibreglass planter to match every design scheme.

Our Fibreglass planter is made of high-quality reinforced Fibreglass. This makes the planter sturdy. The reinforcement has been extended into the corners, which prevents splitting. The Fibreglass is dyed through, and the planter will retain its colour.

Fibreglass glossy

The ELLIPSE Fibreglass planter gives gardens an elegant look. The Fibreglass planter is intended for outdoor use. By default, it is not waterproof. Optionally, the ELLIPSE planter can be supplied in a waterproof version.

Our Fibreglass planter is made of high-quality reinforced Fibreglass. This makes the planter sturdy. The reinforcement has been extended into the corners, which prevents splitting. The Fibreglass is dyed through, and the planter will retain its colour. The ‘glossy’ finish gives the planter a smooth and stylish appeal.



ELLIPSE

DESCRIPTION	STANDARD			
Top Edge	70 x 25 mm			
Material thickness	3 mm			
Feet	-			
Drainage holes	-			
				KG
PEL1	2000	1200	600	34
PEL2	1150	800	600	20



ELLIPSE

DESCRIPTION	STANDARD			
Top Edge	70 x 25 mm			
Material thickness	3 mm			
Feet	-			
Drainage holes	-			
				KG
PELH1	2000	1200	600	34
PELH2	1150	800	600	20



VALENCIA

The VALENCIA is the chic version of the CARREZ. However, this wooden planter has feet and is a little more robust. It will look very much at home in a Mediterranean garden.

OPTIONS



CUSTOM MADE

Hardwood

The VALENCIA hardwood planter gives gardens a robust and warm look. This planter is made of tropical hardwood. All our hardwood is classified as durability class 2 and will last up to 25 years. The use of hardwood creates a planter that blends beautifully with the lush greenery of the garden environment.

Due to the high durability class of the wood, this hardwood planter needs no further treatment. The planter will turn grey over time. This colour change does not affect the quality of the planter. The planter is constructed using only high-quality stainless-steel fasteners, and the base is lined with an anti-root membrane.



VALENCIA

DESCRIPTION	STANDARD
Top Edge	60-80 mm
Material thickness	21 mm
Feet	100 mm



				KG
HR4	1200	1200	950	109
HR4.2	1200	1200	600	71
HR5	1000	1000	950	87
HR5.2	1000	1000	600	56
HR6	800	800	800	52
HR6.1	800	800	600	39
HR7	700	700	700	37
HR8	600	600	600	29



VALENCIA

DESCRIPTION	STANDARD
Top Edge	60-80 mm
Material thickness	21 mm
Feet	100 mm



				KG
HR22	2000	500	600	65
HR22.1	1500	500	600	48
HR22.2	1200	500	600	38
HR24.2	1200	400	800	43
HR24.3	1000	400	800	37



MALAGA RHOMBUS

The MALAGA RHOMBUS has a chic appeal. This elegant planter will look attractive in any outdoor space.

OPTIONS



CUSTOM MADE

Hardwood

The MALAGA RHOMBUS hardwood planter gives gardens a robust and warm look. This planter is made of tropical hardwood. All our hardwood is classified as durability class 2 and will last up to 25 years. The use of hardwood creates a planter that blends beautifully with the lush greenery of the garden environment.

Due to the high durability class of the wood, this planter needs no further treatment. The planter will turn grey over time. This colour change does not affect the quality of the planter. The planter is constructed using only high-quality stainless-steel fasteners, and the base is lined with an anti-root membrane.



MALAGA RHOMBUS

DESCRIPTION	STANDARD
Top Edge	65 mm
Material thickness	21 mm
Feet	20 mm



				KG
HRS4.1	1200	1200	746	93
HRS5.1	1000	1000	746	74
HRS6.1	800	800	746	56
HRS8	600	600	608	34



MALAGA RHOMBUS

DESCRIPTION	STANDARD
Top Edge	65 mm
Material thickness	21 mm
Feet	20 mm



				KG
HRS22	2000	500	608	75
HRS22.1	1500	500	608	64
HRS22.2	1200	500	608	49



TAP

The square, tapered shape of the TAP gives it a chic look. This wooden planter will work well in projects with square planters.

OPTIONS



CUSTOM MADE

Hardwood

The TAP hardwood planter is made of tropical hardwood, which gives gardens a warm and robust look. All our hardwood is classified as durability class 2 and will last up to 25 years. The use of hardwood creates a planter that blends beautifully with the lush greenery of the garden environment.

Due to the high durability class of the wood, this hardwood planter needs no further treatment. The planter will turn grey over time. This colour change does not affect the quality of the planter. The planter is constructed using only high-quality stainless-steel fasteners, and the base is lined with an anti-root membrane.



TAP

DESCRIPTION	STANDARD
Top Edge	21 mm
Material thickness	21 mm
Feet	20 mm



				KG
HO5	700	700	989	57
HO6	600	600	850	42
HO7	550	550	712	33
HO8	500	500	574	25



CANNA

This vase-shaped planter is available only in Fibreglass. The CANNA stands out with its elegant downward-sloping curves.

Fibreglass

The CANNA Fibreglass planter gives gardens a stylish look. The Fibreglass planter is intended for outdoor use. By default, it is not waterproof. Optionally, the CANNA planter can be supplied in a waterproof version. The planter is supplied in two standard colours. Other colours can be ordered for an additional cost, so there is a matching CANNA Fibreglass planter to match every design scheme.

Our Fibreglass planter is made of high-quality reinforced Fibreglass. This makes the planter sturdy. The reinforcement has been extended into the corners, which prevents splitting. The Fibreglass is dyed through, and the planter will retain its colour.

Fibreglass glossy

The CANNA polyester planter gives gardens a stylish look. The polyester planter is intended for outdoor use. By default, it is not waterproof. Optionally, the CANNA planter can be supplied in a waterproof version.

Our polyester planter is made of high-quality reinforced polyester. This makes the planter sturdy. The reinforcement has been extended into the corners, which prevents splitting. The polyester is dyed through, and the planter will retain its colour. The 'glossy' finish gives the planter a smooth and stylish appeal.

OPTIONS

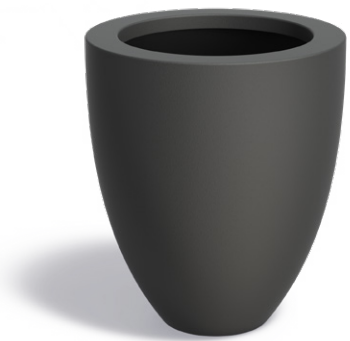


CANNA

DESCRIPTION	STANDARD
Top Edge	80-130 x 40 mm
Material thickness	3 mm
Feet	-
Drainage holes	-



			KG
PC1	500	590	4
PC2	500	900	6
PC3	720	840	8
PC4	800	1000	11
PC5	1000	950	12
PC6	700	1120	11



CANNA

DESCRIPTION	STANDARD
Top Edge	80-130 x 40 mm
Material thickness	3 mm
Feet	-
Drainage holes	-



			KG
PCH1	500	590	4
PCH2	500	900	6
PCH3	720	840	8
PCH4	800	1000	11
PCH6	700	1120	11





CEDER

The bowl-shaped CEDER will look beautiful on a large patio. For this planter, we recommend seasonal plants such as pansies and marigolds. These plants give gardens a cheerful look.

OPTIONS



WATERPROOF

Fibreglass

The CEDER fibreglass planter gives gardens a cheerful look. The fibreglass planter is intended for outdoor use. By default, it is not waterproof. Optionally, the CEDER planter can be supplied in a waterproof version. The planter is supplied in two standard colours. Other colours can be ordered for an additional cost, so there is a matching CEDER fibreglass planter to match every design scheme.

Our fibreglass planter is made of high-quality reinforced fibreglass. This makes the planter sturdy. The reinforcement has been extended into the corners, which prevents splitting. The fibreglass is dyed through, and the planter will retain its colour.



CEDER

DESCRIPTION	STANDARD
Top Edge	125-230 x 30 mm
Material thickness	3 mm
Feet	-
Drainage holes	-



			KG
PD1	2000	400	17
PD2	1530	340	12
PD3	1200	400	9



MALVA

Exquisite design makes the MALVA an exclusive item. Small feet on the base create the illusion that this planter floats slightly above the ground, giving it a graceful appearance.

OPTIONS

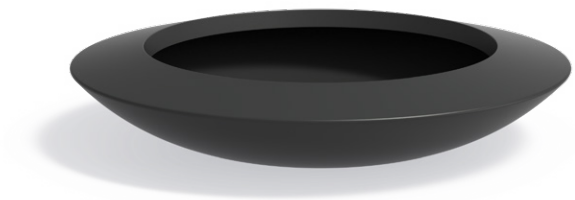


WATERPROOF

Fibreglass

With its dynamic form, the MALVA fibreglass planter will look beautiful in any garden. The fibreglass planter is intended for outdoor use. By default, it is not waterproof. The planter is available in RAL 7021 and 9016 as standard. Other colours can be ordered for an additional charge, so there is a matching MALVA fibreglass planter to match every design scheme.

Our fibreglass planter is made of high-quality reinforced fibreglass. This makes the planter sturdy. The reinforcement has been extended into the corners, which prevents splitting. The fibreglass is dyed through, and the planter will retain its colour.



MALVA

DESCRIPTION	STANDARD
Top Edge	80-130 x 40 mm
Material thickness	3 mm
Feet	-
Drainage holes	-



			KG
PM1	1200	200	7
PM2	2000	400	18



ORGAN

The ORGAN has - the name says it all - a beautiful, organic shape. Combining several of these planters will create a charming display

OPTIONS



WATERPROOF





Fibreglass

With its organic shape, the ORGAN fibreglass planter will look lovely in any garden. The fibreglass planter is intended for outdoor use. By default, it is not waterproof. Optionally, the ORGAN planter can be supplied in a waterproof version. The planter is supplied in two standard colours. Other colours can be ordered for an additional charge, so there is a matching ORGAN fibreglass planter to match every design scheme.

Our fibreglass planter is made of high-quality reinforced fibreglass. This makes the planter sturdy. The reinforcement has been extended into the corners, which prevents splitting. The fibreglass is dyed through, and the planter will retain its colour.

Fibreglass glossy

With its organic shape, the ORGAN fibreglass planter will look lovely in any garden. The fibreglass planter is intended for outdoor use. By default, it is not waterproof. Optionally, the ORGAN planter can be supplied in a waterproof version.

Our fibreglass planter is made of high-quality reinforced fibreglass. This makes the planter sturdy. The reinforcement has been extended into the corners, which prevents splitting. The fibreglass is dyed through, and the planter will retain its colour. The ‘glossy’ finish gives the planter a smooth and stylish appeal.

ORGAN

DESCRIPTION	STANDARD			
Top Edge	60 x 25 mm			
Material thickness	3 mm			
Feet	-			
Drainage holes	-			
				KG
PO1	1610	1335	600	26

ORGAN

DESCRIPTION	STANDARD			
Top Edge	60 x 25 mm			
Material thickness	3 mm			
Feet	-			
Drainage holes	-			
				KG
POH1	1610	1335	600	26



SHAPE

The SHAPE, like the ORGAN, will create a charming display when several are arranged together. In comparison with the ORGAN, which has an organic form, the SHAPE planter has a more angular design.

OPTIONS



WATERPROOF





Fibreglass

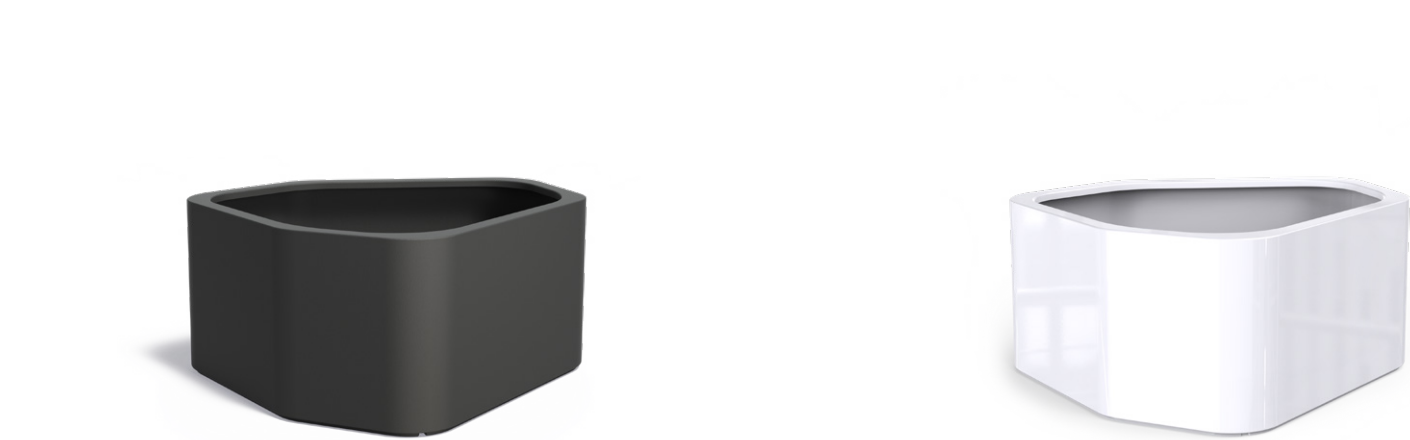
With its dynamic form, the SHAPE fibreglass planter will look great in any garden. The fibreglass planter is intended for outdoor use. By default, it is not waterproof. Optionally, the SHAPE planter can be supplied in a waterproof version. The planter is supplied in two standard colours. Other colours can be ordered for an additional charge, so there is a matching SHAPE fibreglass planter to match every design scheme.

Our fibreglass planter is made of high-quality reinforced fibreglass. This makes the planter sturdy. The reinforcement has been extended into the corners, which prevents splitting. The fibreglass is dyed through, and the planter will retain its colour.

Fibreglass glossy

With its dynamic form, the SHAPE fibreglass planter will look great in any garden. The fibreglass planter is intended for outdoor use. By default, it is not waterproof. Optionally, the SHAPE planter can be supplied in a waterproof version.

Our fibreglass planter is made of high-quality reinforced fibreglass. This makes the planter sturdy. The reinforcement has been extended into the corners, which prevents splitting. The fibreglass is dyed through, and the planter will retain its colour. The 'glossy' finish gives the planter a smooth and stylish appeal.



SHAPE

DESCRIPTION	STANDARD			
Top Edge	60 x 25 mm			
Material thickness	3 mm			
Feet	-			
Drainage holes	-			
				KG
PS1	1300	1260	600	21

SHAPE

DESCRIPTION	STANDARD			
Top Edge	60 x 25 mm			
Material thickness	3 mm			
Feet	-			
Drainage holes	-			
				KG
PSH1	1300	1260	600	21



TUBE

The TUBE is very reminiscent of the classic Italian terracotta pot. Its rounded contours give it an elegant look. The TUBE will enhance the ambience of modern outdoor spaces.





Corten steel

The TUBE corten steel planter will add boldness and warmth to any and warmth to any garden, thanks to the orange-brown patina on the metal. This patina is formed by a natural layer of rust. Another name for corten steel is weathering steel: weather conditions have a positive effect on this planter.

Corten steel is a metal alloy made by adding copper, phosphorus, silicon, nickel and chromium to steel. When exposed to air, the material forms a protective layer of rust. This natural coating prevents further corrosion, extending the planter’s life.

Coated steel

The TUBE coated steel planter gives gardens a modern look. The planter is corrosion resistant. By default, it is not waterproof. The material is also durable and strong. The planter is available in two standard colours. Almost all other colours can be ordered for an additional charge.

Once constructed, the coated steel planter is given several finishing treatments. The metal is roughened to allow better adhesion of the powder coating. This is applied with a strong adhesive primer. Finally, the planter is finished with a hard topcoat of Qualicoat class 2. These layers ensure that the planter is of very high quality and scratch resistant.



TUBE

DESCRIPTION	STANDARD
Top Edge	ø 100 mm
Material thickness	2 mm
Feet	18 mm
Drainage holes	ø 25 mm

			KG
CTC1	1000	950	62
CTC2	800	750	41
CTC3	700	600	32



TUBE

DESCRIPTION	STANDARD
Top Edge	ø 100 mm
Material thickness	2 mm
Feet	18 mm
Drainage holes	ø 25 mm

			KG
ATC1	1000	950	62
ATC2	800	750	41
ATC3	700	600	32



EXTEND

This unique planter has a distinctive shape with a narrow base. This unusual form makes the EXTEND an exceptionally original and popular product.





Corten steel

The EXTEND corten steel planter will add boldness and warmth to any garden, thanks to the orange-brown patina on the metal. This patina is formed by a natural layer of rust. Another name for corten steel is weathering steel: weather conditions have a positive effect on this planter.

Corten steel is a metal alloy made by adding copper, phosphorus, silicon, nickel and chromium to iron. When exposed to air, the material forms a protective layer of rust. This natural coating prevents further corrosion, extending the planter’s life.

Aluminium

The EXTEND aluminium planter gives gardens a stylish and timeless look. The planter is corrosion resistant. By default, it is not waterproof. Aluminium is very lightweight. The aluminium planter can be left outside all year round without damage, even in freezing temperatures, so you can enjoy this planter for many years.

Once constructed, the aluminium planter is given several finishing treatments. The metal is roughened to allow better adhesion of the powder coating. This powder coating is available in a variety of colours and is applied with a strong adhesive primer. Finally, the planter is finished with a hard topcoat. This ensures that the EXTEND aluminium planter is scratch resistant.

EXTEND

DESCRIPTION	STANDARD
Top Edge	50 x 23 mm
Material thickness	3 mm
Feet	18 mm
Drainage holes	ø 25 mm

			KG
CXT1	1200	600	85
CXT2	1000	750	77
CXT3	800	900	67
CXT4	700	1100	67

EXTEND

DESCRIPTION	STANDARD
Top Edge	50 x 23 mm
Material thickness	3 mm
Feet	18 mm
Drainage holes	ø 25 mm

			KG
AXT1	1200	600	30
AXT2	1000	750	27
AXT3	800	900	23
AXT4	700	1100	23



BOTAN

The feet on the BOTAN planter give it a chic look.
The open space beneath it creates a feeling of air and light in the garden environment.





Corten steel

The BOTAN corten steel planter will add boldness and warmth to any garden, thanks to the orange-brown patina on the metal. This patina is formed by a natural layer of rust. Another name for corten steel is weathering steel: weather conditions have a positive effect on this planter.

Corten steel is a metal alloy made by adding copper, phosphorus, silicon, nickel and chromium to steel. When exposed to air, the material forms a protective layer of rust. This natural coating prevents further corrosion, extending the planter’s life.

Aluminium

The BOTAN aluminium planter gives gardens a stylish look. The planter is corrosion resistant. By default, it is not waterproof. Aluminium is very lightweight. The aluminium planter can be left outside all year round without damage, even in freezing temperatures. That means that you can enjoy this planter for many years.

Once constructed, the aluminium planter is given several finishing treatments. The metal is roughened to allow better adhesion of the powder coating. This powder coating is available in a variety of colours and is applied with a strong adhesive primer. Finally, the planter is finished with a hard topcoat. This ensures that the BOTAN aluminium planter is scratch resistant.



BOTAN

DESCRIPTION	STANDARD
Top Edge	56 x 25 mm
Material thickness	3 mm
Feet	50 x 173-300
Drainage holes	ø 25 mm

			KG
CBN1	1000	600	72
CBN2	800	750	70
CBN3	600	1000	60
CBN4	500	1200	61



BOTAN

DESCRIPTION	STANDARD
Top Edge	56 x 25 mm
Material thickness	3 mm
Feet	50 x 173-300
Drainage holes	ø 25 mm

			KG
ABN1	1000	600	25
ABN2	800	750	24
ABN3	600	1000	21
ABN4	500	1200	21



FACET

The FACET stands out with its diamond-like appearance. This twelve-sided planter will truly be a jewel in any garden.





Corten steel

The FACET corten steel planter will add individuality and warmth to gardens, thanks to the orange-brown patina on the metal. This patina is formed by a natural layer of rust. Another name for corten steel is weathering steel: weather conditions have a positive effect on this planter.

Corten steel is a metal alloy made by adding copper, phosphorus, silicon, nickel and chromium to steel. When exposed to air, the material forms a protective layer of rust. This natural coating prevents further corrosion, extending the planter’s life.

Aluminium

The FACET aluminium planter will add a touch of individuality to any garden. The planter is corrosion resistant. By default, it is not waterproof. Aluminium is very lightweight. The aluminium planter can be left outside all year round without damage, even in freezing temperatures. That means that you can enjoy this planter for many years.

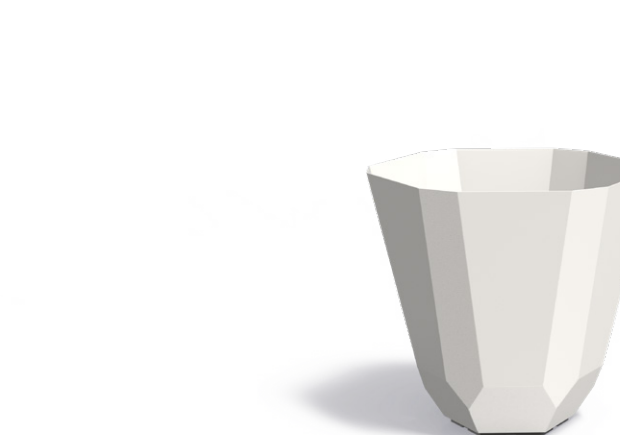
Once constructed, the aluminium planter is given several finishing treatments. The metal is roughened to allow better adhesion of the powder coating. This powder coating is available in a variety of colours and is applied with a strong adhesive primer. Finally, the planter is finished with a hard topcoat. This ensures that the FACET aluminium planter is scratch resistant.



FACET

DESCRIPTION	STANDARD
Material thickness	3 mm
Feet	17 mm
Drainage holes	ø 25 mm

			KG
CFT1	1200	500	46
CFT2	1000	600	40
CFT3	800	800	42
CFT4	650	1000	44
CFT5	650	1200	46



FACET

DESCRIPTION	STANDARD
Material thickness	3 mm
Feet	17 mm
Drainage holes	ø 25 mm

			KG
AFT1	1200	500	16
AFT2	1000	600	14
AFT3	800	800	15
AFT4	650	1000	15
AFT5	650	1200	16



DOMUS

The DOMUS planter has a distinctive 'floating' rim around the top. This will create a light and dynamic look in gardens and on patios.





Corten steel

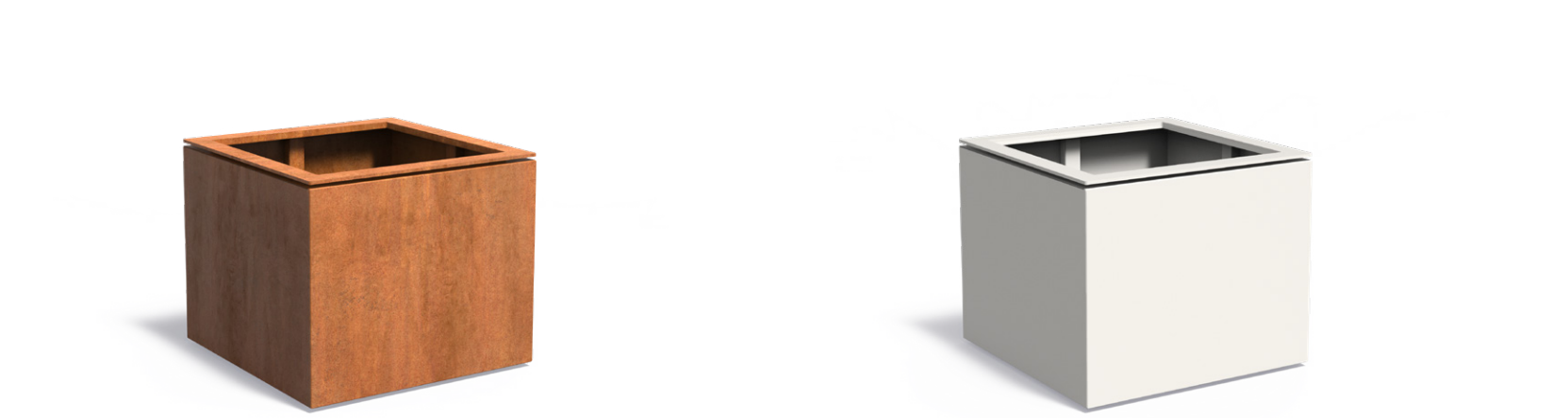
The DOMUS corten steel planter will add boldness and warmth to any garden, thanks to the orange-brown patina on the metal. This patina is formed by a natural layer of rust. Another name for corten steel is weathering steel: weather conditions have a positive effect on this planter.

Corten steel is a metal alloy made by adding copper, phosphorus, silicon, nickel and chromium to steel. When exposed to air, the material forms a protective layer of rust. This natural coating prevents further corrosion, extending the planter’s life.

Aluminium

The DOMUS aluminium planter gives gardens a stylish look. The planter is corrosion resistant. By default, it is not waterproof. Aluminium is very lightweight. The aluminium planter can be left outside all year round without damage, even in freezing temperatures. That means that you can enjoy this planter for many years.

Once constructed, the aluminium planter is given several finishing treatments. The metal is roughened to allow better adhesion of the powder coating. This powder coating is available in a variety of colours and is applied with a strong adhesive primer. Finally, the planter is finished with a hard topcoat. This ensures that the DOMUS aluminium planter is scratch resistant.



DOMUS

DESCRIPTION	STANDARD			
Top Edge	70 x 10 mm			
Material thickness	2 mm			
Feet	15 mm			
Drainage holes	ø 25 mm			
				KG
DOC1	980	980	800	92
DOC2	830	830	700	71
DOC3	680	680	600	48
DOC4	530	530	600	35

DOMUS

DESCRIPTION	STANDARD			
Top Edge	70 x 10 mm			
Material thickness	3 mm			
Feet	15 mm			
Drainage holes	ø 25 mm			
				KG
DOA1	980	980	800	44
DOA2	830	830	700	34
DOA3	680	680	600	22
DOA4	530	530	600	17



TONIC

Should we describe the TONIC as a straight-sided planter with rounded corners or a round planter with straight sides? One thing is certain: the TONIC has a unique design!





Corten steel

The TONIC corten steel planter gives gardens a bold, stylish and warm look, thanks to the orange-brown patina on the metal. This patina is formed by a natural layer of rust. Another name for corten steel is weathering steel: weather conditions have a positive effect on this planter.

Corten steel is a metal alloy made by adding copper, phosphorus, silicon, nickel and chromium to steel. When exposed to air, the material forms a protective layer of rust. This natural coating prevents further corrosion, extending the planter’s life.

Aluminium

The TONIC aluminium planter gives gardens a stylish look. The planter is corrosion resistant. By default, it is not waterproof. Aluminium is very lightweight. The aluminium planter can be left outside all year round without damage, even in freezing temperatures. That means that you can enjoy this planter for many years.

Once constructed, the aluminium planter is given several finishing treatments. The metal is roughened to allow better adhesion of the powder coating. This powder coating is available in a variety of colours and is applied with a strong adhesive primer. Finally, the planter is finished with a hard topcoat. This ensures that the TONIC aluminium planter is scratch resistant.



TONIC

DESCRIPTION	STANDARD
Top Edge	30 x 5 mm
Material thickness	3 mm
Feet	17 mm
Drainage holes	ø 25 mm

				KG
TOC1	1100	1100	800	112
TOC2	1000	1000	800	92
TOC3	900	900	720	74



TONIC

DESCRIPTION	STANDARD
Top Edge	30 x 5 mm
Material thickness	4 mm
Feet	17 mm
Drainage holes	ø 25 mm

				KG
TOA1	1100	1100	800	51
TOA2	1000	1000	800	42
TOA3	900	900	720	34



TOPIC

The rim around the base of the TOPIC is reflected on the rim at the top. The small, recessed edge on the base of the TOPIC planter creates the illusion that it's floating slightly above the ground.





Corten steel

The TOPIC corten steel planter gives gardens a stylish, timeless, and warm look, thanks to the orange-brown patina on the metal. This patina is formed by a natural layer of rust. Another name for corten steel is weathering steel: weather conditions have a positive effect on this planter.

Corten steel is a metal alloy made by adding copper, phosphorus, silicon, nickel and chromium to steel. When exposed to air, the material forms a protective layer of rust. This natural coating prevents further corrosion, extending the planter’s life.

Aluminium

The TOPIC aluminium planter gives gardens a stylish and timeless look. The planter is corrosion resistant. By default, it is not waterproof. Aluminium is very lightweight. The aluminium planter can be left outside all year round without damage, even in freezing temperatures. That means that you can enjoy this planter for many years.

Once constructed, the aluminium planter is given several finishing treatments. The metal is roughened to allow better adhesion of the powder coating. This powder coating is available in a variety of colours and is applied with a strong adhesive primer. Finally, the planter is finished with a hard topcoat. This ensures that the TOPIC aluminium planter is scratch resistant.



TOPIC

DESCRIPTION	STANDARD
Top Edge	90 x 38 mm
Material thickness	2 mm
Feet	18 mm
Drainage holes	ø 25 mm

			KG
TPC1	1200	600	74
TPC2	1000	800	66
TPC3	800	600	42



TOPIC

DESCRIPTION	STANDARD
Top Edge	90 x 38 mm
Material thickness	3 mm
Feet	18 mm
Drainage holes	ø 25 mm

			KG
TPA1	1200	600	34
TPA2	1000	800	32
TPA3	800	600	21



BOCCA

This planter is ideal for short and low-growing ornamental grasses. Combine it with seating to create a cosy garden retreat. You can also use the planter as a fire bowl to add even more warmth and cosiness to the garden.





Corten steel

The BOCCA corten steel planter will add boldness and warmth to any garden, thanks to the orange-brown patina on the metal. This patina is formed by a natural layer of rust. Another name for corten steel is weathering steel: weather conditions have a positive effect on this planter.

Corten steel is a metal alloy made by adding copper, phosphorus, silicon, nickel and chromium to iron. When exposed to air, the material forms a protective layer of rust. This natural coating prevents further corrosion, extending the planter’s life.

Coated steel



The BOCCA coated steel planter gives gardens a timeless look. The planter is corrosion resistant. By default, it is not waterproof. The material is also durable and strong. The planter is available in RAL colour 9016 as standard. All other standard RAL colours can be ordered for an additional charge.

Once constructed, the coated steel planter is given several finishing treatments. The metal is roughened to allow better adhesion of the powder coating. This is applied with a strong adhesive primer. Finally, the planter is finished with a hard topcoat of Qualicoat class 2. These layers ensure that the planter is of very high quality and scratch resistant.



BOCCA



DESCRIPTION	STANDARD
Material thickness	4 mm
Feet	-
Drainage holes	ø 27 mm

			KG
BOC1	1200	610	74
BOC2	1000	510	51
BOC3	800	410	33



BOCCA

DESCRIPTION	STANDARD
Material thickness	4 mm
Feet	-
Drainage holes	ø 27 mm

			KG
BOA1	1200	610	74
BOA2	1000	510	51
BOA3	800	410	33



BOXER

The BOXER stands out thanks to its 16-sided shape. The play of light over its surface creates fascinating nuances of colour. This planter will look wonderful in almost every kind of green space.





Corten steel

The BOXER corten steel planter will add boldness and warmth to any garden. thanks to the orange-brown patina on the metal. This patina is formed by a natural layer of rust. Another name for corten steel is weathering steel: weather conditions have a positive effect on this planter.

Corten steel is a metal alloy made by adding copper, phosphorus, silicon, nickel and chromium to iron. When exposed to air, the material forms a protective layer of rust. This natural coating prevents further corrosion, extending the planter’s life.

Aluminium

The BOXER aluminium planter gives gardens a stylish and timeless look. The planter is corrosion resistant. By default, it is not waterproof. Aluminium is very lightweight. The aluminium planter can be left outside all year round without damage, even in freezing temperatures, so you can enjoy this planter for many years.

Once constructed, the aluminium planter is given several finishing treatments. The metal is roughened to allow better adhesion of the powder coating. This powder coating is available in a variety of colours and is applied with a strong adhesive primer. Finally, the planter is finished with a hard topcoat. This ensures that the BOXER aluminium planter is scratch resistant.



BOXER

DESCRIPTION	STANDARD
Top Edge	50 x 25 mm
Material thickness	2 mm
Feet	18 mm
Drainage holes	ø 27 mm

			KG
BC1	1200	1000	82
BC2	1000	800	56
BC3	800	600	35



BOXER

DESCRIPTION	STANDARD
Top Edge	50 x 25 mm
Material thickness	3 mm
Feet	18 mm
Drainage holes	ø 27 mm

			KG
BA1	1200	1000	43
BA2	1000	800	29
BA3	800	600	19



YORK

Derived from the VALENCIA, this planter has an original design and is made from modern materials. One wall of this planter can be removed, making the YORK ideal for creating changing seasonal displays. This planter is particularly popular in public spaces.





Corten steel

The YORK planter is specially designed for easy positioning of heavy cultivation pots. A fully removable side wall and a smooth base allow pots to be slid effortlessly into place.

The YORK corten steel planter has a bold and warm look, thanks to the orange-brown patina on the metal. This patina is formed by a natural layer of rust. Another name for corten steel is weathering steel: weather conditions have a positive effect on this planter.

Corten steel is a metal alloy made by adding copper, phosphorus, silicon, nickel and chromium to iron. When exposed to air, the material forms a protective layer of rust. This natural coating prevents further corrosion, extending the planter’s life.

Aluminium

The YORK planter is specially designed for easy positioning of heavy cultivation pots. A fully removable side wall and a smooth base allow pots to be slid effortlessly into place.




The YORK aluminium planter gives gardens a stylish look. The planter is corrosion resistant. By default, it is not waterproof. Aluminium is very lightweight. The aluminium planter can be left outside all year round without damage, even in freezing temperatures, so you can enjoy this planter for many years.

Once constructed, the aluminium planter is given several finishing treatments. The metal is roughened to allow better adhesion of the powder coating. This powder coating is available in a variety of colours and is applied with a strong adhesive primer. Finally, the planter is finished with a hard topcoat. This ensures that the YORK aluminium planter is scratch resistant.



YORK



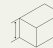
DESCRIPTION	STANDARD
Top Edge	80 mm
Material thickness	2 mm
Feet	90 mm
Drainage holes	ø 27 mm

				KG
CY1	1000	1000	800	97
CY2	800	800	800	77



YORK

DESCRIPTION	STANDARD
Top Edge	80 mm
Material thickness	3 mm
Feet	90 mm
Drainage holes	ø 27 mm

				KG
AY1	1000	1000	800	50
AY2	800	800	800	40



Water elements





POND AND POND WALL

This modern pond is available in square and rectangular versions. The still water in the pond creates a calm atmosphere in the garden.

Bring even more life and movement to your garden by adding a pond wall to your pond. This wall can be installed fixed or freestanding. It is available with either a letterbox waterfall or a three-spout fountain waterfall. Whichever version you choose, this pond wall is a work of art!

OPTIONS



CUSTOM MADE





Corten steel Pond Wall

Tranquil and evocative, our corten steel pond wall is a wonderful addition to a garden. The pond wall is suitable for freestanding or fixed installation at our pond, making it an even more dynamic garden feature. We have free-standing pond walls with either a letterbox waterfall or a three-spout fountain waterfall. There’s a wall to suit every pond and garden!

Corten steel has an orange-brown colour, the result of a natural rust layer. Another name for corten steel is weathering steel: weather conditions have a positive effect on this material.

Corten steel is a metal alloy made by adding copper, phosphorus, silicon, nickel and chromium to iron. When exposed to air, the material forms a protective layer of rust. This natural coating prevents further corrosion, so the pond walls will last for many years.

Corten steel Pond

Tranquil and evocative, our corten steel pond is a wonderful addition to your garden. The pond is suitable for plants and fish, making this water feature a beautifully dynamic garden element. We coat the interior surfaces of our corten steel ponds with polyurea, so the metal will not corrode. Our ponds are equipped with a fixed overflow pipe as standard. They can also be ordered with optional inlet holes drilled on either the short or long side.

Corten steel has an orange-brown colour, the result of a natural rust layer. Another name for corten steel is weathering steel: weather conditions have a positive effect on this material.

Corten steel is a metal alloy made by adding copper, phosphorus, silicon, nickel and chromium to iron. When exposed to air, the material forms a protective layer of rust. This natural coating prevents further corrosion, so the ponds will last for many years.



POND WALL FIXED

DESCRIPTION	STANDARD
Material thickness	3 mm
Ouflow waterfall	150 mm
Incl. waterfall	Yes
Incl. pump	Yes



				KG
VCM1.1.600	3000	250	600	98
VCM1.1.1500	3000	250	600	98
VCM1.1.3	3000	250	600	98
VCM1.2.600	2500	250	600	83
VCM1.2.1500	2500	250	600	83
VCM1.2.3	2500	250	600	83
VCM1.3.600	2000	250	600	67
VCM1.3.1500	2000	250	600	67
VCM1.3.3	2000	250	600	67
VCM1.4.600	1500	250	600	51
VCM1.4.3	1500	250	600	51
VCM1.5.600	1200	250	600	44
VCM1.5.3	1200	250	600	44
VCM1.6.600	1000	250	600	36



POND WALL FREE-STANDING

DESCRIPTION	STANDARD
Material thickness	3 mm
Ouflow waterfall	150 mm
Incl. waterfall	Yes
Incl. pump	Yes



				KG
VCM2.1.600	3000	250	1200	168
VCM2.1.1500	3000	250	1200	168
VCM2.1.3	3000	250	1200	168
VCM2.2.600	2500	250	1200	142
VCM2.2.1500	2500	250	1200	142
VCM2.2.3	2500	250	1200	142
VCM2.3.600	2000	250	1200	116
VCM2.3.1500	2000	250	1200	116
VCM2.3.3	2000	250	1200	116
VCM2.4.600	1500	250	1000	74
VCM2.4.3	1500	250	1000	74
VCM2.5.600	1200	250	1000	63
VCM2.5.3	1200	250	1000	63
VCM2.6.600	1000	250	1000	52



POND

DESCRIPTION	STANDARD
Top Edge	90 x 40 mm
Material thickness	3 mm
Feet	-
Overflow pipe	Yes



				KG
VC1	6000	1000	600	451
VC1.1	6000	1000	400	377
VC2	5000	1000	600	380
VC2.1	5000	1000	400	317
VC3	4000	1000	600	311
VC3.1	4000	1000	400	259
VC4	3000	2000	600	358
VC4.1	3000	2000	400	306
VC5	3000	1500	600	298
VC5.1	3000	1500	400	252
VC6	3000	1000	600	243
VC6.1	3000	1000	400	201
VC7	3000	800	600	221
VC7.1	3000	800	400	181
VC8	2500	1200	600	228
VC8.1	2500	1200	400	190
VC9	2000	800	600	156
VC9.1	2000	800	400	128
VC10	1500	800	600	124
VC10.1	1500	800	400	101
VC11	1200	800	600	106
VC11.1	1200	800	400	86





Aluminium Pond wall

Tranquil and evocative, our aluminium pond wall is a wonderful addition to a garden. The pond wall is suitable for freestanding or fixed installation at our pond, making it an even more dynamic garden feature. We have free-standing pond walls with either a letterbox waterfall or a three-spout fountain waterfall. There’s a wall to suit every pond and garden!

Aluminium is corrosion resistant: the pond can withstand freezing temperatures and other weather conditions without damage. You will be able to enjoy this product for many years. The aluminium pond wall is available in several colours.

Once constructed, the aluminium pond wall is given several finishing treatments. The material is roughened to allow better adhesion of the powder coating. This powder coating is available in different colours and is applied with a strong adhesive primer. Finally, the aluminium is finished with a hard topcoat. This ensures that our pond walls are scratch resistant.

Aluminium Pond

Tranquil and evocative, our aluminium pond is a wonderful addition to your garden. The pond is suitable for plants and fish, making this water feature a beautifully dynamic garden element. Our ponds are equipped with a fixed overflow pipe as standard. They can also be ordered with optional inlet holes drilled on either the short or long side.

Aluminium is corrosion resistant: the pond can withstand freezing temperatures and other weather conditions without damage. You will be able to enjoy this product for many years. The aluminium pond is available in different colours.

Once constructed, the aluminium pond is given several finishing treatments. The material is roughened to allow better adhesion of the powder coating. This powder coating is available in a variety of colours and is applied with a strong adhesive primer. Finally, the aluminium is finished with a hard topcoat. This ensures that our ponds are scratch resistant.



POND WALL FIXED

DESCRIPTION	STANDARD
Material thickness	4 mm
Ouflow waterfall	150 mm
Incl. waterfall	Yes
Incl. pump	Yes



				KG
VM1.1.600	3000	250	600	57
VM1.1.1500	3000	250	600	57
VM1.1.3	3000	250	600	57
VM1.2.600	2500	250	600	48
VM1.2.1500	2500	250	600	48
VM1.2.3	2500	250	600	48
VM1.3.600	2000	250	600	39
VM1.3.1500	2000	250	600	39
VM1.3.3	2000	250	600	39
VM1.4.600	1500	250	600	30
VM1.4.3	1500	250	600	30
VM1.5.600	1200	250	600	25
VM1.5.3	1200	250	600	25
VM1.6.600	1000	250	600	21



POND WALL FREE-STANDING

DESCRIPTION	STANDARD
Material thickness	4 mm
Ouflow waterfall	150 mm
Incl. waterfall	Yes
Incl. pump	Yes



				KG
VM2.1.600	3000	250	1200	91
VM2.1.1500	3000	250	1200	91
VM2.1.3	3000	250	1200	91
VM2.2.600	2500	250	1200	76
VM2.2.1500	2500	250	1200	76
VM2.2.3	2500	250	1200	76
VM2.3.600	2000	250	1200	62
VM2.3.1500	2000	250	1200	62
VM2.3.3	2000	250	1200	62
VM2.4.600	1500	250	1000	42
VM2.4.3	1500	250	1000	42
VM2.5.600	1200	250	1000	36
VM2.5.3	1200	250	1000	36
VM2.6.600	1000	250	1000	31



POND

DESCRIPTION	STANDARD
Top Edge	90 x 40 mm
Material thickness	4 mm
Feet	-
Overflow pipe	Yes



				KG
VA1	6000	1000	600	201
VA1.1	6000	1000	400	168
VA2	5000	1000	600	172
VA2.1	5000	1000	400	143
VA3	4000	1000	600	140
VA3.1	4000	1000	400	117
VA4	3000	2000	600	162
VA4.1	3000	2000	400	138
VA5	3000	1500	600	136
VA5.1	3000	1500	400	115
VA6	3000	1000	600	109
VA6.1	3000	1000	400	91
VA7	3000	800	600	99
VA7.1	3000	800	400	81
VA8	2500	1200	600	104
VA8.1	2500	1200	400	87
VA9	2000	800	600	71
VA9.1	2000	800	400	58
VA10	1500	800	600	57
VA10.1	1500	800	400	46
VA11	1200	800	600	48
VA11.1	1200	800	400	39





WATER TABLE

LED lighting gives this water table show-stopping appeal. Its fountains further enhance the ambience of the garden. The lights and fountains can be controlled separately.

OPTIONS



CUSTOM MADE





Corten steel

Our water tables are distinctive and stylish garden ornaments. This corten steel water table will look lovely among the lush greenery of any garden. All our water tables include a pump and LED-lit fountains as standard. So you can enjoy this water feature at night too!

Corten steel has an orange-brown patina, giving the water bowl a bold, warm look. The colour is the result of a natural layer of rust. Another name for corten steel is weathering steel: weather conditions have a positive effect on this material.

Corten steel is a metal alloy made by adding copper, phosphorus, silicon, nickel and chromium to iron. When exposed to air, the material forms a protective layer of rust. This natural coating prevents further corrosion, so the water tables will last for many years.



WATER TABLE

DESCRIPTION	STANDARD
Top Edge	90 mm
Material thickness	3 mm
Feet	15 mm
Overflow pipe	Yes



				KG
CB1	6000	1000	400	453
CB2	5000	1000	400	384
CB3	4000	1000	400	311
CB4	3000	1000	400	240
CB5	2000	800	400	138



WATER TABLE CORTEN STEEL BOWLS

DESCRIPTION	STANDARD
Top Edge	90 mm
Material thickness	3 mm
Feet	15 mm
Overflow pipe	Yes

				KG
CBS2	5000	1000	400	423
CBS3	4000	1000	400	343



WATER TABLE

DESCRIPTION	STANDARD
Top Edge	90 mm
Material thickness	3 mm
Feet	15 mm
Overflow pipe	Yes



				KG
CB11	1200	1200	400	118
CB12	1000	1000	400	90
CB13	800	800	400	65



WATER TABLE

DESCRIPTION	STANDARD
Top Edge	90 mm
Material thickness	3 mm
Feet	15 mm
Overflow pipe	Yes

			KG
CBR1	1450	750	162
CBR2	1200	750	123
CBR3	1000	750	96
CBR4	1450	400	124
CBR5	1200	400	92
CBR6	1000	400	70





Aluminium

Our water tables are distinctive and stylish garden ornaments. Their angular lines add style and dynamism to garden spaces. The aluminium water table will look lovely among the lush greenery of any garden. All our water tables include a pump and LED-lit fountains as standard. So you can enjoy this water feature at night too!

Aluminium is corrosion resistant: the water table can withstand freezing temperatures and other weather conditions without damage. You will be able to enjoy this product for many years. The aluminium water table is available in several colours.

Once constructed, the aluminium water table is given several finishing treatments. The material is roughened to allow better adhesion of the powder coating. This powder coating is available in a variety of colours and is applied with a strong adhesive primer. Finally, the aluminium is finished with a hard topcoat. This ensures that our water tables are scratch resistant.



WATER TABLE

DESCRIPTION	STANDARD
Top Edge	90 mm
Material thickness	3 mm
Feet	15 mm
Overflow pipe	Yes



				KG
AB1	6000	1000	400	189
AB2	5000	1000	400	154
AB3	4000	1000	400	126
AB4	3000	1000	400	97
AB5	2000	800	400	49



WATER TABLE

DESCRIPTION	STANDARD
Top Edge	90 mm
Material thickness	3 mm
Feet	15 mm
Overflow pipe	Yes





				KG
AB11	1200	1200	400	42
AB12	1000	1000	400	32
AB13	800	800	400	23



WATER TABLE

DESCRIPTION	STANDARD
Top Edge	90 mm
Material thickness	3 mm
Feet	15 mm
Overflow pipe	Yes

			KG
ABR1	1450	750	61
ABR2	1200	750	46
ABR3	1000	750	36
ABR4	1450	400	48
ABR5	1200	400	35
ABR6	1000	400	26





WATER BOWL

The water bowl is a beautiful addition to almost any outdoor space. It will create a pleasant, tranquil environment.





Steel

The steel water bowl is coated with anthracite. With its modern design, it will look splendid in any garden. Adding this water decoration to your garden will make it a place where you can really relax and unwind. Our water bowls are multifunctional. They have a hole that can be sealed with a rubber stopper, allowing them to be used as a planter.

Our anthracite water bowl is corrosion resistant. Coated steel is also durable and strong. Once constructed, the coated steel water bowl is given several finishing treatments. The bowl is galvanised to prevent rust formation, and a strong adhesive primer is applied. Finally, the water bowl is finished with a hard topcoat of Qualicoat Class 2. These layers ensure that the water bowl is of very high quality.

Coated steel



The steel water bowl is coated with anthracite. With its modern design, it will look splendid in any garden. Adding this water decoration to your garden will make it a place where you can really relax and unwind. Our water bowls are multifunctional. They have a hole that can be sealed with a rubber stopper, allowing them to be used as a planter.

Our anthracite water bowl is corrosion resistant. Coated steel is also durable and strong. Once constructed, the coated steel water bowl is given several finishing treatments. The bowl is galvanised to prevent rust formation, and a strong adhesive primer is applied. Finally, the water bowl is finished with a hard topcoat of Qualicoat Class 2. These layers ensure that the water bowl is of very high quality.



WATER BOWL



DESCRIPTION	STANDARD
Material thickness	3 mm

			KG
WNS1	600	140	8
WNS2	800	210	15
WNS3	1000	210	22
WNS4	1200	210	30
WNS5	1500	330	67
WNS6	2000	310	142



WATER BOWL

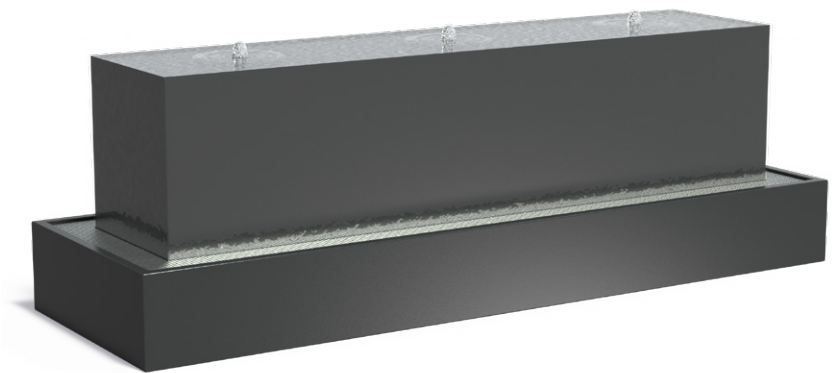
DESCRIPTION	STANDARD
Material thickness	3 mm

			KG
WNG1	600	140	8
WNG2	800	210	15
WNG3	1000	210	22
WNG4	1200	210	30
WNG5	1500	330	67



WATER BLOCK

Water flows attractively over all four sides of this distinctive water feature. This means it can be positioned anywhere in the garden. The water streams gently over the edges into the collection tank, creating the effect of a soothing waterfall.





Corten steel

Our corten steel water block is a distinctive and stylish garden ornament. Water bubbles up through the stainless steel nozzle, which is enhanced with LED lights. The water then flows smoothly down the sides of the block into the underground collection tank before being pumped back to the top. The LED lighting provides extra ambience at night.

Corten steel has an orange-brown patina, giving the water block a bold, warm look. The colour is the result of a natural layer of rust. Another name for corten steel is weathering steel: weather conditions have a positive effect on this material.

Corten steel is a metal alloy made by adding copper, phosphorus, silicon, nickel and chromium to iron. When exposed to air, the material forms a protective layer of rust. This natural coating prevents further corrosion, so the water blocks will last for many years

Aluminium

Our aluminium water block is a distinctive and stylish garden ornament. Water bubbles up through the stainless steel nozzle, which is enhanced with LED lights. The water then flows smoothly down the sides of the block into the underground collection tank before being pumped back to the top. The LED lighting provides extra ambience at night.

Aluminium is corrosion resistant: the water block can withstand freezing temperatures and other weather conditions without damage. You will be able to enjoy this product for many years. The aluminium water block is available in several colours.

Once constructed, the aluminium water block is given several finishing treatments. The material is roughened to allow better adhesion of the powder coating. This powder coating is available in a variety of colours and is applied with a strong adhesive primer. Finally, the aluminium is finished with a hard topcoat. This ensures that our water blocks are scratch resistant.



WATER BLOCK

DESCRIPTION	STANDARD
Material thickness	3 mm
Incl. fountain	Yes
Incl. pump	Yes

				KG
CWB1	700	700	700	173
CWB4	3000	700	700	464

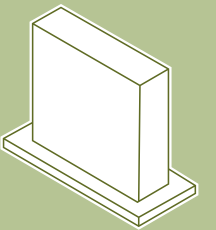
WATER BLOCK

DESCRIPTION	STANDARD
Material thickness	4 mm
Incl. fountain	Yes
Incl. pump	Yes

				KG
AWB1	700	700	700	79
AWB4	3000	700	700	209



Walls





WALLS

This wall's hollow construction allows easy installation of additions like lighting. It comes into its own as a partition, for example, to separate planted and paved areas.

OPTIONS



CUSTOM MADE





Corten steel

With its bold, warm look, the corten steel wall adds a striking structural element to green spaces. The wall can also be used to create a private corner or provide shelter from the wind. The hollow construction makes it easy to install accessories. The wall should always be fixed securely to the ground.

The orange-brown patina on the metal contributes to the bold, warm look of this wall. The colour is the result of a natural layer of rust. Another name for corten steel is weathering steel: weather conditions have a positive effect on this wall.

Corten steel is a metal alloy made by adding copper, phosphorus, silicon, nickel and chromium to iron. When exposed to air, the material forms a protective layer of rust. This natural coating prevents further corrosion and makes the wall long-lasting.

Aluminium

With its timeless look, the aluminium wall adds a striking structural element to green spaces. The wall can also be used to create a private corner or provide shelter from the wind. The hollow construction makes it easy to install accessories. The wall should always be fixed securely to the ground.

Aluminium is resistant to corrosion and is available in several colours. It can be left outside all year round without damage, even in freezing temperatures, so you can enjoy this product for many years.

Once constructed, the aluminium wall is given several finishing treatments. The metal is roughened to allow better adhesion of the powder coating. This powder coating is available in a variety of colours and is applied with a strong adhesive primer. Finally, the wall is finished with a hard topcoat. This ensures that the wall is scratch resistant.

Fibreglass

With its tranquil look, the fibreglass wall adds a striking structural element to green spaces. The wall can also be used to create a private corner or provide shelter from the wind. The hollow construction makes it easy to install accessories. The wall should always be fixed securely to the ground.

Our fibreglass wall is made of high-quality reinforced fibreglass. This makes the wall sturdy. The fibreglass is dyed through, and the wall will retain its colour.



WALL

DESCRIPTION	STANDARD
Material thickness	2 mm



				KG
CW1	4000	150	2000	314
CW1.1	4000	150	1350	213
CW1.2	4000	150	1000	167
CW1.3	4000	150	800	130
CW1.4	4000	150	600	104
CW2	3000	150	2000	234
CW2.1	3000	150	1350	161
CW2.2	3000	150	1000	124
CW2.3	3000	150	800	97
CW2.4	3000	150	600	77
CW3	2000	150	2000	162
CW3.1	2000	150	1350	108
CW3.2	2000	150	1000	85
CW3.3	2000	150	800	66
CW3.4	2000	150	600	53
CW4	1500	150	2000	119
CW4.1	1500	150	1350	82
CW4.2	1500	150	1000	64
CW4.3	1500	150	800	50
CW4.4	1500	150	600	40
CW5	1000	150	2000	83
CW5.1	1000	150	1350	57
CW5.2	1000	150	1000	45
CW5.3	1000	150	800	35
CW5.4	1000	150	600	28

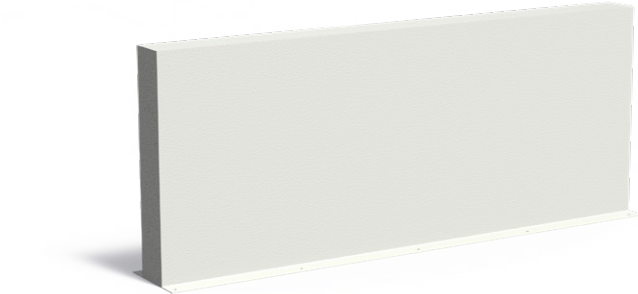


WALL

DESCRIPTION	STANDARD
Material thickness	3 mm



				KG
AW1	4000	150	1940	169
AW1.1	4000	150	1350	121
AW1.2	4000	150	1000	96
AW1.3	4000	150	800	76
AW1.4	4000	150	600	62
AW2	3000	150	1940	130
AW2.1	3000	150	1350	93
AW2.2	3000	150	1000	73
AW2.3	3000	150	800	58
AW2.4	3000	150	600	47
AW3	2000	150	1940	88
AW3.1	2000	150	1350	63
AW3.2	2000	150	1000	50
AW3.3	2000	150	800	39
AW3.4	2000	150	600	32
AW4	1500	150	1940	69
AW4.1	1500	150	1350	49
AW4.2	1500	150	1000	39
AW4.3	1500	150	800	31
AW4.4	1500	150	600	25
AW5	1000	150	1940	49
AW5.1	1000	150	1350	35
AW5.2	1000	150	1000	28
AW5.3	1000	150	800	22
AW5.4	1000	150	600	18



WALL

DESCRIPTION	STANDARD
Material thickness	3 mm

				KG
PW1	4000	150	2000	98
PW1.1	4000	150	1500	75
PW1.2	4000	150	1000	53
PW1.3	4000	150	800	43
PW2	3000	150	2000	75
PW2.1	3000	150	1500	57
PW2.2	3000	150	1000	40
PW2.3	3000	150	800	33
PW3	2000	150	2000	51
PW3.1	2000	150	1500	39
PW3.2	2000	150	1000	27
PW3.3	2000	150	800	23
PW5	1000	150	2000	27
PW5.1	1000	150	1500	21
PW5.2	1000	150	1000	15
PW5.3	1000	150	800	12





Panels





PANELS

Our panels can be used as a windbreak or to create a private corner in a garden. These panels are also striking works of art. We have a variety of beautiful designs, such as panels with motifs inspired by nature. They add an interesting extra dimension to a garden when set in lush greenery.





Corten steel

Corten steel panels give gardens a bold, warm look, thanks to the orange-brown patina on the metal. This patina is formed by a natural layer of rust. Another name for corten steel is weathering steel: weather conditions have a positive effect on these corten steel panels.

Corten steel is a metal alloy made by adding copper, phosphorus, silicon, nickel and chromium to iron. When exposed to air, the material forms a protective layer of rust. This natural coating prevents further corrosion so the panels will last for many years.

Aluminium

Aluminium is corrosion resistant: The panels can withstand freezing temperatures and other weather conditions without damage, so you can enjoy this product for many years. The aluminium panel is available in several colours.

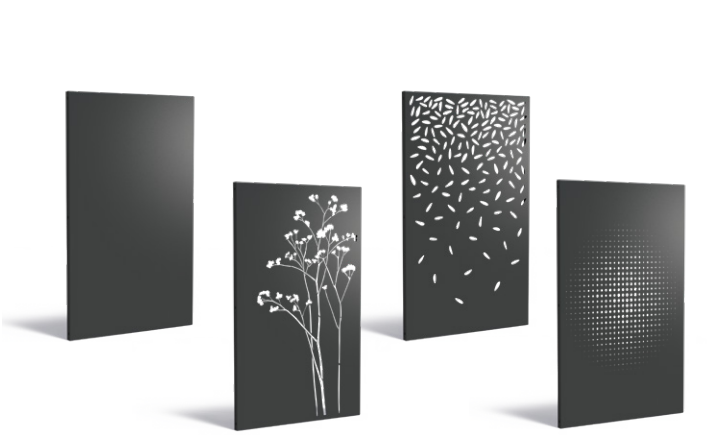
Once constructed, the aluminium panel is given several finishing treatments. The metal is roughened to allow better adhesion of the powder coating. This powder coating is available in a variety of colours and is applied with a strong adhesive primer. Finally, the aluminium is finished with a hard topcoat. This ensures that our panels are scratch resistant.



PANELS

DESCRIPTION	STANDARD
Material thickness	2 mm

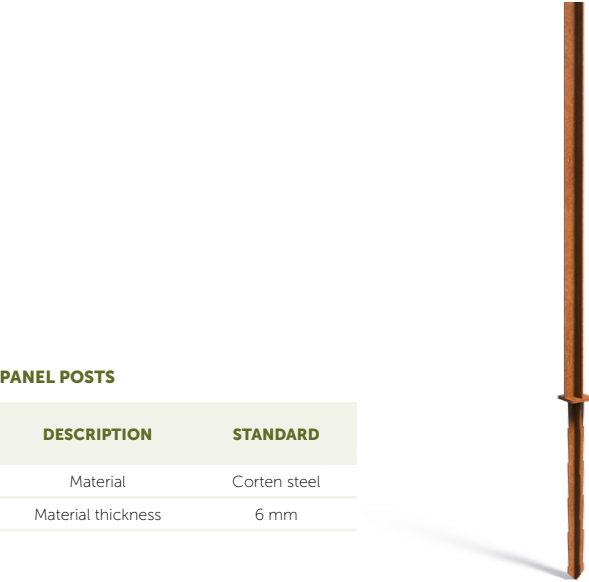
				KG
CPB1	1350	50	1800	43
CPB2	1100	50	1800	36
CPB3	800	50	1800	27
CPB4	600	50	1800	21
CPB5	400	50	1800	15
CPN1	1100	50	1800	32
CPN2	1100	50	1800	32
CPN4	1100	50	1800	34
CPN5	1100	50	1800	34
CPN7	1100	50	1800	34
CPN11	1100	50	1800	31
CPA2.1	1100	50	1800	35
CPA2.2	1100	50	1800	34
CPA2.3	1100	50	1800	35
CPA2.4	1100	50	1800	35
CPA3	1100	50	1800	35
CPA4	1100	50	1800	35
CPA8.1	1100	50	1800	32
CPA8.2	1100	50	1800	32
CPA9	1100	50	1800	24
CPA10	1100	50	1800	24



PANELS




DESCRIPTION	STANDARD
Material thickness	3 mm

				KG
APB1	1350	50	1800	22
APB2	1100	50	1800	19
APB3	800	50	1800	14
APB4	600	50	1800	11
APB5	400	50	1800	8
APN1	1100	50	1800	17
APN2	1100	50	1800	16
APN4	1100	50	1800	18
APN5	1100	50	1800	18
APN7	1100	50	1800	17
APN11	1100	50	1800	16
APA2.1	1100	50	1800	18
APA2.2	1100	50	1800	18
APA2.3	1100	50	1800	18
APA2.4	1100	50	1800	18
APA3	1100	50	1800	18
APA4	1100	50	1800	17
APA8.1	1100	50	1800	17
APA8.2	1100	50	1800	17
APA9	1100	50	1800	12
APA10	1100	50	1800	13



PANEL POSTS



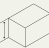
DESCRIPTION	STANDARD
Material	Corten steel
Material thickness	6 mm

				KG
CPP1	106	60	2700	21



PANEL POSTS

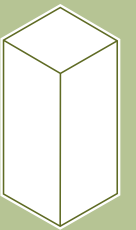
DESCRIPTION	STANDARD
Material	Staal gecoat
Material thickness	6 mm

				KG
APP1	106	60	2700	21





Pedestals





PEDESTALS

This pedestal will add extra flair to any garden. The plinth, which is typically used to display a statue or fire bowl, can also be used outside the garden. For example, it will look attractive in galleries or other public spaces.

OPTIONS



CUSTOM MADE





Corten steel

Create a beautiful garden with the sleek lines of our pedestal. The pedestal is perfect for showcasing artworks, water bowls and fire bowls. The open shape of the u-pedestal also makes it suitable for storing logs. The product is made of corten steel, giving it a bold, warm look that works well with the lush greenery in a garden. A real eye-catcher!

Corten steel has an orange-brown colour, the result of a natural rust layer. Another name for corten steel is weathering steel: weather conditions have a positive effect on this material.

Corten steel is a metal alloy made by adding copper, phosphorus, silicon, nickel and chromium to steel. When exposed to air, the material forms a protective layer of rust. This natural coating prevents further corrosion, so the pedestals will last for many years.

Corten steel with seat

Create a beautiful garden with the sleek design of our pedestal with seat. The pedestal can be used as a seat or as the perfect plinth for displaying a sculpture. This makes it easy to create a cosy corner in the garden. The product is made of corten steel, giving it a bold, warm look that works well with the lush greenery in a garden. A real eye-catcher!

Corten steel has an orange-brown colour, the result of a natural rust layer. Another name for corten steel is weathering steel: weather conditions have a positive effect on this material.

Corten steel is a metal alloy made by adding copper, phosphorus, silicon, nickel and chromium to steel. When exposed to air, the material forms a protective layer of rust. This natural coating prevents further corrosion, so the pedestals will last for many years.



PEDESTAL

DESCRIPTION	STANDARD
Material thickness	2 mm
Maximum load	150 kg



				KG
CK1	500	500	1200	42
CK2	500	500	1000	36
CK3	500	500	800	29
CK4	500	500	600	23
CK5	400	400	1200	33
CK6	400	400	1000	28
CK7	400	400	800	23
CK8	400	400	600	18
CK9	400	400	400	13
CK10	300	300	1000	20
CK11	300	300	800	17
CK12	300	300	600	13
CK13	300	300	400	9
CK20	1200	1200	400	60
CK21	1000	1000	400	47
CK22	800	800	400	33
CK23	600	600	400	22
CK29	3000	400	400	66
CK30	2000	400	400	46
CK31	1500	400	400	35
CK32	1000	400	400	25



U-PEDESTAL

DESCRIPTION	STANDARD
Material thickness	2 mm
Maximum load	150 kg






				KG
CKU1	500	500	1200	52
CKU2	500	500	1000	44
CKU3	500	500	800	37
CKU4	500	500	600	29
CKU5	400	400	1200	41
CKU6	400	400	1000	35
CKU7	400	400	800	29
CKU8	400	400	600	23
CKU9	400	400	400	17



PEDESTAL WITH SEAT

DESCRIPTION	STANDARD
Material thickness	2 mm
Type of wood	Garapa
Beam size	130 x 20 mm

				KG
CKW29	3000	400	430	90
CKW30	2000	400	430	62
CKW31	1500	400	430	48
CKW32	1000	400	430	32





Aluminium

Create a beautiful garden with the sleek lines of this pedestal. The pedestal is perfect for showcasing artworks, water bowls and fire bowls. Made of aluminium, this product has a stylish and timeless look that will work well with the lush greenery in a garden. A real eye-catcher!

Aluminium is corrosion resistant. This makes the pedestal able to withstand freezing temperatures and other weather conditions without damage. You will be able to enjoy this product for many years. The aluminium pedestal is also available in different colours.

Once constructed, the aluminium pedestal is given several finishing treatments. The metal is roughened to allow better adhesion of the powder coating. This powder coating is available in a variety of colours and is applied with a strong adhesive primer. Finally, the aluminium is finished with a hard topcoat. This ensures that our pedestals are scratch resistant.

Aluminium with seat

Create a beautiful garden with the sleek design of our pedestal with seat. The pedestal can be used as a seat or as the perfect plinth for displaying a sculpture. This makes it easy to create a cosy corner in the garden. Made of aluminium, this product has a stylish and timeless look that will work well with the lush greenery in a garden. A real eye-catcher!

Aluminium is corrosion resistant. This makes the pedestal able to withstand freezing temperatures and other weather conditions without damage. You will be able to enjoy this product for many years. The aluminium pedestal is also available in different colours.

Once constructed, the aluminium pedestal is given several finishing treatments. The metal is roughened to allow better adhesion of the powder coating. This powder coating is available in a variety of colours and is applied with a strong adhesive primer. Finally, the aluminium is finished with a hard topcoat. This ensures that our pedestals are scratch resistant.



PEDESTAL

DESCRIPTION	STANDARD
Material thickness	3 mm
Maximum load	150 kg



				KG
AS1	500	500	1200	22
AS2	500	500	1000	18
AS3	500	500	800	15
AS4	500	500	600	12
AS5	400	400	1200	17
AS6	400	400	1000	14
AS7	400	400	800	12
AS8	400	400	600	9
AS9	400	400	400	7
AS10	300	300	1000	10
AS11	300	300	800	9
AS12	300	300	600	7
AS13	300	300	400	5
AS20	1200	1200	400	31
AS21	1000	1000	400	24
AS22	800	800	400	17
AS23	600	600	400	11
AS29	3000	400	400	35
AS30	2000	400	400	24
AS31	1500	400	400	18
AS32	1000	400	400	13

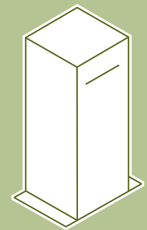
PEDESTAL WITH SEAT

DESCRIPTION	STANDARD
Material thickness	3 mm
Type of wood	Garapa
Beam size	130 x 20 mm

				KG
ASW29	3000	400	430	56
ASW30	2000	400	430	39
ASW31	1500	400	430	29
ASW32	1000	400	430	20



Letterboxes





IVAR

The IVAR is undoubtedly the most stylish letterbox in our catalogue. The slot in the corner makes this letterbox unique. When placed in the garden of a modern villa, for example, it will look absolutely stunning!





Corten steel

The IVAR corten steel letterbox has a bold and warm look, thanks to the orange-brown patina on the metal. This patina is formed by a natural layer of rust. Another name for corten steel is weathering steel: weather conditions have a positive effect on this material.

Corten steel is a metal alloy made by adding copper, phosphorus, silicon, nickel and chromium to steel. When exposed to air, the material forms a protective layer of rust. This natural coating prevents further corrosion and makes the letterbox long-lasting.

Aluminium

The IVAR aluminium letterbox has a timeless look. Aluminium is also resistant to corrosion and is available in a variety of colours. The letterbox can be left outside all year round without damage, even in freezing temperatures. That means that you will enjoy this letterbox for many years.

Once constructed, the letterbox is given several finishing treatments. The metal is roughened to allow better adhesion of the powder coating. This powder coating is available in a variety of colours and is applied with a strong adhesive primer. Finally, the letterbox is finished with a hard topcoat. This ensures that the IVAR letterbox is scratch resistant.



IVAR

DESCRIPTION	STANDARD
Material thickness	1,5 mm

				KG
IVC1.1	350	350	1200	27



IVAR

DESCRIPTION	STANDARD
Material thickness	2 mm

				KG
IVA1.1	350	350	1200	13



FLYN

This letterbox has a modern look. The FLYN has an exciting three-dimensional design that will look outstanding in any front garden.





Corten steel

The FLYN corten steel letterbox has a bold and warm look, thanks to the orange-brown patina on the metal. This patina is formed by a natural layer of rust. Another name for corten steel is weathering steel: weather conditions have a positive effect on this material.

Corten steel is a metal alloy made by adding copper, phosphorus, silicon, nickel and chromium to steel. When exposed to air, the material forms a protective layer of rust. This natural coating prevents further corrosion and makes the letterbox long-lasting.

Aluminium

The FLYN aluminium letterbox has a timeless look. Aluminium is also resistant to corrosion and is available in a variety of colours. The letterbox can be left outside all year round without damage, even in freezing temperatures. That means that you will enjoy this letterbox for many years.

Once constructed, the letterbox is given several finishing treatments. The metal is roughened to allow better adhesion of the powder coating. This powder coating is available in a variety of colours and is applied with a strong adhesive primer. Finally, the letterbox is finished with a hard topcoat. This ensures that the FLYN letterbox is scratch resistant.



FLYN

DESCRIPTION	STANDARD
Material thickness	2 mm

				KG
LFC1.1	350	350	1200	25



FLYN

DESCRIPTION	STANDARD
Material thickness	2 mm

				KG
LFA1.1	350	350	1200	15



NOX

Truly a minimalist letterbox. With its chic design, the NOX gives gardens a touch of class.





Corten steel

The NOX corten steel letterbox has a bold and warm look, thanks to the orange-brown patina on the metal. This patina is formed by a natural layer of rust. Another name for corten steel is weathering steel: weather conditions have a positive effect on this material.

Corten steel is a metal alloy made by adding copper, phosphorus, silicon, nickel and chromium to steel. When exposed to air, the material forms a protective layer of rust. This natural coating prevents further corrosion and makes the letterbox long-lasting.

Aluminium

The NOX aluminium letterbox has a timeless look. Aluminium is also resistant to corrosion and is available in a variety of colours. The letterbox can be left outside all year round without damage, even in freezing temperatures. That means that you will enjoy this letterbox for many years.

Once constructed, the letterbox is given several finishing treatments. The metal is roughened to allow better adhesion of the powder coating. This powder coating is available in a variety of colours and is applied with a strong adhesive primer. Finally, the letterbox is finished with a hard topcoat. This ensures that the NOX letterbox is scratch resistant.



NOX

DESCRIPTION	STANDARD
Material thickness	1,5 mm

				KG
NOC1	350	350	1200	28



NOX

DESCRIPTION	STANDARD
Material thickness	2 mm

				KG
NOA1	350	350	1200	13



CASE

This modern letterbox has the advantage of being large enough to safely store a parcel. It's truly a letterbox for the future. On top of that, the lid offers good protection from the rain.





Corten steel

The CASE corten steel letterbox ensures that your mail and packages can always be delivered safely, even when you're not at home! Our letterbox is equipped with a roomy parcel box. The delivery agent simply opens the lid of the letterbox and places the package inside. The package automatically drops down when the lid is closed. You can empty the letterbox via a lockable door.

The corten steel letterbox has a warm look, thanks to the orange-brown patina on the metal. This patina is formed by a natural layer of rust. Another name for corten steel is weathering steel: weather conditions have a positive effect on this material.

Corten steel is a metal alloy made by adding copper, phosphorus, silicon, nickel and chromium to steel. When exposed to air, the material forms a protective layer of rust. This natural coating prevents further corrosion and makes the letterbox long-lasting.

Aluminium

The CASE aluminium letterbox ensures that your mail and packages can always be delivered safely, even when you're not at home! Our letterbox is equipped with a roomy parcel box. The delivery agent simply opens the lid of the letterbox and places the package inside. The package automatically drops down when the lid is closed. You can empty the letterbox via a lockable door.




The CASE aluminium letterbox has a timeless look. Aluminium is also resistant to corrosion and is available in a variety of colours. The letterbox can be left outside all year round without damage, even in freezing temperatures. That means that you will enjoy this letterbox for many years.

Once constructed, the letterbox is given several finishing treatments. The metal is roughened to allow better adhesion of the powder coating. This powder coating is available in a variety of colours and is applied with a strong adhesive primer. Finally, the letterbox is finished with a hard topcoat. This ensures that the CASE letterbox is scratch resistant.



CASE




DESCRIPTION	STANDARD
Material thickness	2 mm

				KG
PCC1	500	400	1200	58



CASE

DESCRIPTION	STANDARD
Material thickness	3 mm

				KG
PCA1	500	400	1200	31



PACA

The PACA is the wide version of the CASE. Unlike our other models, the door of this letterbox is located at the front. The PACA will look right at home in any garden!





Corten steel

You'll always receive your mail and packages safely and securely with the PACA corten steel letterbox, even when you're not at home! Our letterbox has a hatch that's roomy enough for a parcel. When the delivery agent closes the hatch, the parcel drops down into the compartment, which is then automatically sealed shut. You can empty the letterbox via a lockable door.

The corten steel letterbox has a warm look, thanks to the orange-brown patina on the metal. This patina is formed by a natural layer of rust. Another name for corten steel is weathering steel: weather conditions have a positive effect on this material.

Corten steel is a metal alloy made by adding copper, phosphorus, silicon, nickel and chromium to steel. When exposed to air, the material forms a protective layer of rust. This natural coating prevents further corrosion and makes the letterbox long-lasting.

Aluminium

You'll always receive your mail and packages safely and securely with the PACA corten steel letterbox, even when you're not at home! Our letterbox has a hatch that's roomy enough for a parcel. When the delivery agent closes the hatch, the parcel drops down into the compartment, which is then automatically sealed shut. You can empty the letterbox via a lockable door.

The PACA aluminium letterbox has a timeless look. Aluminium is also resistant to corrosion and is available in a variety of colours. The letterbox can be left outside all year round without damage, even in freezing temperatures. That means that you will enjoy this letterbox for many years.

Once constructed, the letterbox is given several finishing treatments. The metal is roughened to allow better adhesion of the powder coating. This powder coating is available in a variety of colours and is applied with a strong adhesive primer. Finally, the letterbox is finished with a hard topcoat. This ensures that the PACA letterbox is scratch resistant.



PACA

DESCRIPTION	STANDARD
Material thickness	2 mm

				KG
PPS1	870	300	1250	110



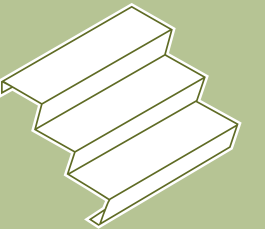
PACA

DESCRIPTION	STANDARD
Material thickness	3 mm

				KG
PPA1	870	300	1250	40



Stairs





STAIRS

This staircase looks beautiful when combined with other corten steel or aluminium garden elements. A simple and attractive way to bridge different levels within a garden, these steps will add style to any green outdoor space.

OPTIONS



CUSTOM MADE





Corten steel

These sturdy corten steel stairs allow you to effortlessly connect areas of different heights. The natural colour and generous width of the metal give the staircase a luxurious and timeless look. This product looks particularly impressive when combined with other corten steel garden elements! The orange-brown patina on the metal contributes to the timeless and luxurious appeal of this staircase. The colour is the result of a natural rust layer. Another name for corten steel is weathering steel: weather conditions have a positive effect on these stairs.

Corten steel is a metal alloy made by adding copper, phosphorus, silicon, nickel and chromium to iron. When exposed to air, the material forms a protective layer of rust. This natural coating prevents further corrosion and makes the staircase long-lasting.

Aluminium

These sturdy aluminium steps allow you to effortlessly connect areas in a garden that differ in height. The natural colour and generous width of the metal give the staircase a luxurious and timeless look. This product looks particularly impressive when combined with other corten steel garden elements!

Aluminium is resistant to corrosion and is available in several colours. The material can be left outside all year round without damage, even in freezing temperatures, so you can enjoy this product for many years.

Once constructed, the aluminium stairs are given several finishing treatments. The metal is roughened to allow better adhesion of the powder coating. This powder coating is available in a variety of colours and is applied with a strong adhesive primer. Finally, the staircase is finished with a hard topcoat. This ensures that the stairs are scratch resistant.

CORTEN STEEL



STAIRS

DESCRIPTION	STANDARD
Material thickness	3 mm
Hight step	170 mm
Depth step	240 mm



2 STEPS

				KG
CST2.1	1000	480	340	33
CST2.2	1250	480	340	39
CST2.3	1500	480	340	49
CST2.4	2000	480	340	62
CST2.5	2500	480	340	78
CST2.6	3000	480	340	91

3 STEPS

				KG
CST3.1	1000	720	510	47
CST3.2	1250	720	510	56
CST3.3	1500	720	510	70
CST3.4	2000	720	510	88
CST3.5	2500	720	510	112
CST3.6	3000	720	510	130

4 STEPS

				KG
CST4.1	1000	960	680	61
CST4.2	1250	960	680	73
CST4.3	1500	960	680	91
CST4.4	2000	960	680	115
CST4.5	2500	960	680	145
CST4.6	3000	960	680	169

5 STEPS

				KG
CST5.1	1000	1200	850	75
CST5.2	1250	1200	850	90
CST5.3	1500	1200	850	112
CST5.4	2000	1200	850	141
CST5.5	2500	1200	850	179
CST5.6	3000	1200	850	208

6 STEPS

				KG
CST6.1	1000	1440	1020	89
CST6.2	1250	1440	1020	106
CST6.3	1500	1440	1020	134
CST6.4	2000	1440	1020	168
CST6.5	2500	1440	1020	222
CST6.6	3000	1440	1020	257

7 STEPS




				KG
CST7.1	1000	1680	1190	103
CST7.2	1250	1680	1190	123
CST7.3	1500	1680	1190	155
CST7.4	2000	1680	1190	195
CST7.5	2500	1680	1190	256
CST7.6	3000	1680	1190	297




8 STEPS

				KG
CST8.1	1000	1920	1360	121
CST8.2	1250	1920	1360	140
CST8.3	1500	1920	1360	176
CST8.4	2000	1920	1360	221
CST8.5	2500	1920	1360	293
CST8.6	3000	1920	1360	338

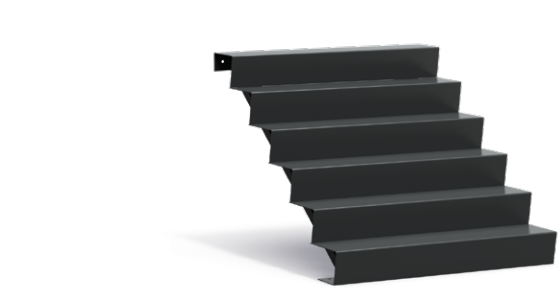
9 STEPS

				KG
CST9.1	1000	2160	1530	132
CST9.2	1250	2160	1530	157
CST9.3	1500	2160	1530	197
CST9.4	2000	2160	1530	247
CST9.5	2500	2160	1530	329
CST9.6	3000	2160	1530	379

10 STEPS				
				KG
CST10.1	1000	2400	1700	146
CST10.2	1250	2400	1700	174
CST10.3	1500	2400	1700	219
CST10.4	2000	2400	1700	274
CST10.5	2500	2400	1700	364
CST10.6	3000	2400	1700	420

11-17 STEPS				
				KG
CST11.1	1000	1680	1870	176
CST11.2	1250	1680	1870	206
CST12.1	1000	1920	2040	191
CST12.2	1250	1920	2040	224
CST13.1	1000	2160	2210	207
CST13.2	1250	2160	2210	242
CST14.1	1000	2400	2380	222
CST14.2	1250	2400	2380	261
CST15.1	1000	1920	2550	238
CST15.2	1250	1920	2550	279
CST16.1	1000	2160	2720	254
CST16.2	1250	2160	2720	297
CST17.1	1000	2400	2890	267
CST17.2	1250	2400	2890	316




ALUMINIUM









STAIRS


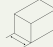

DESCRIPTION	STANDARD
Material thickness	4 mm
Hight step	170 mm
Depth step	240 mm







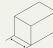

2 STEPS				
				KG
AST2.1	1000	480	340	14
AST2.2	1250	480	340	17
AST2.3	1500	480	340	21
AST2.4	2000	480	340	27
AST2.5	2500	480	340	34
AST2.6	3000	480	340	40


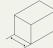

3 STEPS				
				KG
AST3.1	1000	720	510	20
AST3.2	1250	720	510	24
AST3.3	1500	720	510	30
AST3.4	2000	720	510	39
AST3.5	2500	720	510	49
AST3.6	3000	720	510	57




4 STEPS				
				KG
AST4.1	1000	960	680	26
AST4.2	1250	960	680	32
AST4.3	1500	960	680	39
AST4.4	2000	960	680	50
AST4.5	2500	960	680	63
AST4.6	3000	960	680	74




5 STEPS				
				KG
AST5.1	1000	1200	850	32
AST5.2	1250	1200	850	39
AST5.3	1500	1200	850	49
AST5.4	2000	1200	850	62
AST5.5	2500	1200	850	78
AST5.6	3000	1200	850	91




6 STEPS				
				KG
AST6.1	1000	1440	1020	38
AST6.2	1250	1440	1020	46
AST6.3	1500	1440	1020	58
AST6.4	2000	1440	1020	73
AST6.5	2500	1440	1020	96
AST6.6	3000	1440	1020	112

7 STEPS				
				KG
AST7.1	1000	1680	1190	45
AST7.2	1250	1680	1190	54
AST7.3	1500	1680	1190	67
AST7.4	2000	1680	1190	85
AST7.5	2500	1680	1190	111
AST7.6	3000	1680	1190	130

8 STEPS				
				KG
AST8.1	1000	1920	1360	54
AST8.2	1250	1920	1360	65
AST8.3	1500	1920	1360	82
AST8.4	2000	1920	1360	102
AST8.5	2500	1920	1360	136
AST8.6	3000	1920	1360	157

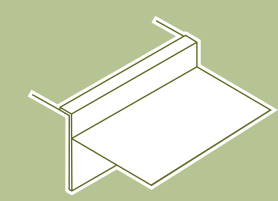
9 STEPS				
				KG
AST9.1	1000	2160	1530	61
AST9.2	1250	2160	1530	73
AST9.3	1500	2160	1530	92
AST9.4	2000	2160	1530	115
AST9.5	2500	2160	1530	153
AST9.6	3000	2160	1530	176

10 STEPS				
				KG
AST10.1	1000	2400	1700	68
AST10.2	1250	2400	1700	80
AST10.3	1500	2400	1700	102
AST10.4	2000	2400	1700	127
AST10.5	2500	2400	1700	169
AST10.6	3000	2400	1700	195

11-17 STEPS				
				KG
AST11.1	1000	1680	1870	75
AST11.2	1250	1680	1870	89
AST12.1	1000	1920	2040	81
AST12.2	1250	1920	2040	92
AST13.1	1000	2160	2210	88
AST13.2	1250	2160	2210	105
AST14.1	1000	2400	2380	95
AST14.2	1250	2400	2380	112
AST15.1	1000	1920	2550	101
AST15.2	1250	1920	2550	120
AST16.1	1000	2160	2720	108
AST16.2	1250	2160	2720	128
AST17.1	1000	2400	2890	115
AST17.2	1250	2400	2890	136



Edging





EDGING

Our garden edging makes it easy to create borders, gravel paths and lawn edges in any garden. This versatile product has many uses. Combine it with other elements made from the same material to create a cohesive garden look.





Corten steel

Our edging can be used in many ways, for example, to create neat lawns or gravel paths. We have several edging options: straight, set and folded. 2 and 3 mm straight edging and 3 mm folded edging is flexible and can be curved. For larger projects, this edging can also be custom made.

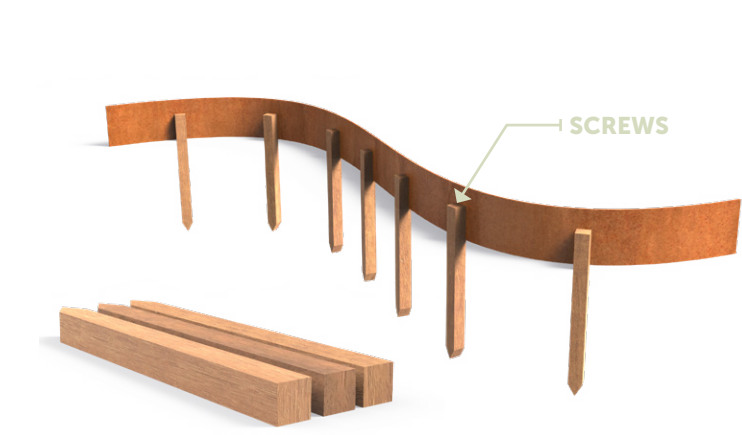
Corten steel has an orange-brown colour, the result of a natural rust layer. Another name for corten steel is weathering steel: weather conditions have a positive effect on this material.

Corten steel is a metal alloy made by adding copper, phosphorus, silicon, nickel and chromium to iron. When exposed to air, the material forms a protective layer of rust. This natural coating prevents further corrosion, so the edging will last for many years.

Galvanised steel



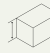
Our edging can be used in many ways, for example, to create neat lawns or gravel paths. We have several edging options: straight, set and folded. 2 and 3 mm straight edging and 3 mm folded edging is flexible and can be curved. For larger projects, this edging can also be custom made.

The hot-dip galvanised material ensures that the edging is corrosion resistant and will last outdoors for decades. Hot-dip galvanising involves immersing the metal in a bath of molten zinc. This prevents the edging from rusting and creates a protective layer over the metal.



HARDWOOD PEGS



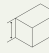
DESCRIPTION	STANDARD
Beam size	50 x 50 mm
Material	Hardwood
Quantity per package	20

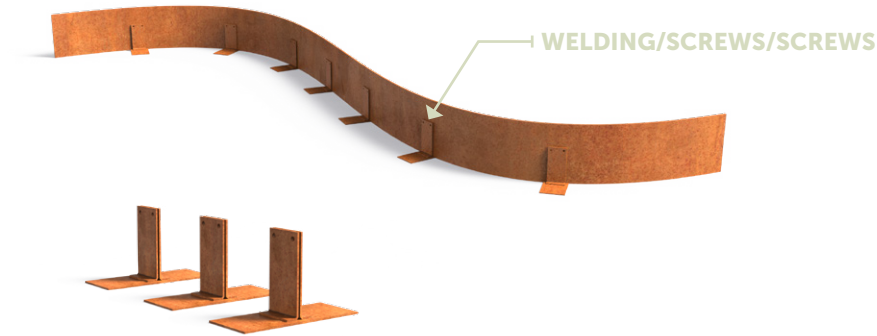
				KG
PK1.1 20x	50	50	400	20
PK2.1 20x	50	50	600	30
PK3.1 20x	50	50	800	50



CORTEN STEEL PEGS

DESCRIPTION	STANDARD
Beam size	30 x 30 mm
Material	Corten steel
Quantity per package	20




				KG
PKC1.1 20x	30	30	600	10



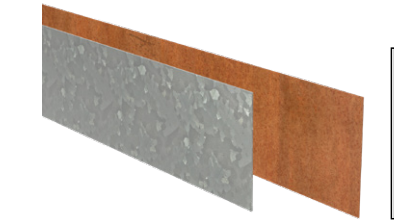
CORTEN STEEL ROOF SUPPORT

DESCRIPTION	STANDARD
Material	Corten steel
Quantity per package	1

Roof support - 2mm

				KG
PKV100	200	80	83	1
PKV150	200	80	123	1
PKV200	200	80	173	1





EDGING STRAIGHT

Code C for corten steel and V for galvanised

DESCRIPTION	STANDARD
Length	2300 mm
Material thickness	2-3 mm

	HEIGHT	THICKNESS	#
C/VR2.70.40	70	2	40
C/VR2.70.20	70	2	20
C/VR2.100.40	100	2	40
C/VR2.100.20	100	2	20
C/VR2.150.40	150	2	40
C/VR2.150.20	150	2	20
C/VR3.150.40	150	3	40
C/VR3.150.20	150	3	20
C/VR2.200.40	200	2	40
C/VR2.200.20	200	2	20
C/VR3.200.40	200	3	40
C/VR3.200.20	200	3	20
C/VR2.290.40	290	2	40
C/VR2.290.20	290	2	20
C/VR3.290.40	290	3	40
C/VR3.290.20	290	3	20
C/VR2.390.40	390	2	40
C/VR2.390.20	390	2	20
C/VR3.390.40	390	3	40
C/VR3.390.20	390	3	20



EDGING SET

Code C for corten steel and V for galvanised

DESCRIPTION	STANDARD
Top edge set	30 mm
Length	2300 mm
Material thickness	2-3 mm

	HEIGHT	THICKNESS	#
C/VZ2.100.40	100	2	40
C/VZ2.100.20	100	2	20
C/VZ2.150.40	150	2	40
C/VZ2.150.20	150	2	20
C/VZ3.150.40	150	3	40
C/VZ3.150.20	150	3	20
C/VZ2.200.40	200	2	40
C/VZ2.200.20	200	2	20
C/VZ3.200.40	200	3	40
C/VZ3.200.20	200	3	20
C/VZ2.290.40	290	2	40
C/VZ2.290.20	290	2	20
C/VZ3.290.40	290	3	40
C/VZ3.290.20	290	3	20
C/VZ2.390.40	390	2	40
C/VZ2.390.20	390	2	20
C/VZ3.390.40	390	3	40
C/VZ3.390.20	390	3	20

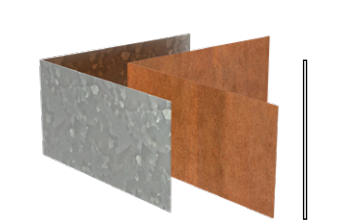


EDGING FLATTENED

Code C for corten steel and V for galvanised

DESCRIPTION	STANDARD
Top edge flattened	15 mm
Length	2300 mm
Material thickness	2-3 mm

	HEIGHT	THICKNESS	#
C/VP2.70.40	70	2	40
C/VP2.70.20	70	2	20
C/VP2.100.40	100	2	40
C/VP2.100.20	100	2	20
C/VP2.150.40	150	2	40
C/VP2.150.20	150	2	20
C/VP3.150.40	150	3	40
C/VP3.150.20	150	3	20
C/VP2.200.40	200	2	40
C/VP2.200.20	200	2	20
C/VP3.200.40	200	3	40
C/VP3.200.20	200	3	20
C/VP2.290.40	290	2	40
C/VP2.290.20	290	2	20
C/VP3.290.40	290	3	40
C/VP3.290.20	290	3	20
C/VP2.390.40	390	2	40
C/VP2.390.20	390	2	20
C/VP3.390.40	390	3	40
C/VP3.390.20	390	3	20



EDGING CORNER STRAIGHT

Code C for corten steel and V for galvanised

DESCRIPTION	STANDARD
Length and width	300 mm
Material thickness	2-3 mm

	HEIGHT	THICKNESS
C/VR2.70BU	70	2
C/VR2.100BU	100	2
C/VR2.150BU	150	2
C/VR3.150BU	150	3
C/VR2.200BU	200	2
C/VR3.200BU	200	3
C/VR2.290BU	290	2
C/VR3.290BU	290	3
C/VR2.390BU	390	2
C/VR3.390BU	390	3



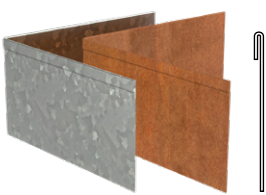
EDGING CORNER SET

DESCRIPTION	STANDARD
Top edge set	30 mm
Length and width	300 mm
Material thickness	2-3 mm

	HEIGHT	THICKNESS
C/VZ2.100BU	100	2
C/VZ2.100BI	100	2
C/VZ2.150BU	150	2
C/VZ2.150BI	150	2
C/VZ3.150BU	150	3
C/VZ3.150BI	150	3
C/VZ2.200BU	200	2
C/VZ2.200BI	200	2
C/VZ3.200BU	200	3
C/VZ3.200BI	200	3
C/VZ2.290BU	290	2
C/VZ2.290BI	290	2
C/VZ3.290BU	290	3
C/VZ3.290BI	290	3
C/VZ2.390BU	390	2
C/VZ2.390BI	390	2
C/VZ3.390BU	390	3
C/VZ3.390BI	390	3

Code C for corten steel and V for galvanised

- Corner BI** = inside corner
Corner BU = outside corner



EDGING CORNER FLATTENED

DESCRIPTION	STANDARD
Top edge flattened	15 mm
Length and width	300 mm
Material thickness	2-3 mm

	HEIGHT	THICKNESS
C/VP2.70BU	70	2
C/VP2.70BI	70	2
C/VP2.100BU	100	2
C/VP2.100BI	100	2
C/VP2.150BU	150	2
C/VP2.150BI	150	2
C/VP3.150BU	150	3
C/VP3.150BI	150	3
C/VP2.200BU	200	2
C/VP2.200BI	200	2
C/VP3.200BU	200	3
C/VP3.200BI	200	3
C/VP2.290BU	290	2
C/VP2.290BI	290	2
C/VP3.290BU	290	3
C/VP3.290BI	290	3
C/VP2.390BU	390	2
C/VP2.390BI	390	2
C/VP3.390BU	390	3
C/VP3.390BI	390	3

Code C for corten steel and V for galvanised

- Corner BI** = inside corner
Corner BU = outside corner





U-PROFILES

Add extra dynamism to the garden with our U-profile overlay edging. Combine these overlay profiles with other corten steel elements to create a beautiful and unified garden design.

OPTIONS



CUSTOM MADE

Corten steel

Our corten steel U-profiles have a thickness of 2 mm and are available in five different widths. The U-profiles can be supplied in two formats: with two equal sides of 50 mm or two unequal sides of 50 mm and 150 mm. U-profiles have a length of 2300 mm and are supplied in packs of ten. The U-profiles cannot be sold individually. However, it is possible to order individual corner pieces.

Corten steel has an orange-brown colour, the result of a natural rust layer. Another name for corten steel is weathering steel: weather conditions have a positive effect on this material.

Corten steel is a metal alloy made by adding copper, phosphorus, silicon, nickel and chromium to iron. When exposed to air, the material forms a protective layer of rust. This natural coating prevents further corrosion, so the profiles will last for many years.

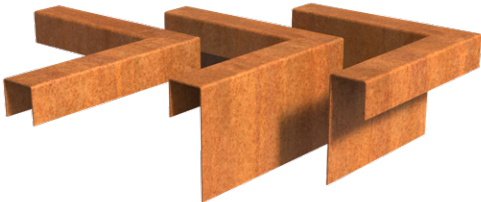


U-PROFILES

DESCRIPTION	STANDARD
Material thickness	2 mm
Pakketgrootte	10 x



				KG
CTE2.50.54.50	2300	54	50	53
CTE2.150.54.50	2300	54	150	89
CTE2.50.64.50	2300	64	50	57
CTE2.150.64.50	2300	64	150	92
CTE2.50.104.50	2300	104	50	71
CTE2.150.104.50	2300	104	150	107
CTE2.50.154.50	2300	154	50	89
CTE2.150.154.50	2300	154	150	125
CTE2.50.204.50	2300	204	50	107
CTE2.150.204.50	2300	204	150	143



U-PROFILES

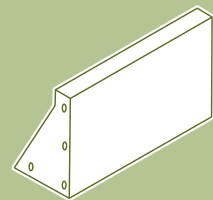
DESCRIPTION	STANDARD
Material thickness	2 mm



				KG
CTE2.50.54.50	300	300	50	1
CTE2.50.54.50	300	300	50	1
CTE2.150.54.50	300	300	150	2
CTE2.150.54.50	300	300	150	2
CTE2.50.64.50	300	300	50	1
CTE2.50.64.50	300	300	50	1
CTE2.150.64.50	300	300	150	2
CTE2.150.64.50	300	300	150	2
CTE2.50.104.50	300	300	50	2
CTE2.50.104.50	300	300	50	2
CTE2.150.104.50	300	300	150	3
CTE2.150.104.50	300	300	150	2
CTE2.50.154.50	300	300	50	2
CTE2.50.154.50	300	300	50	2
CTE2.150.154.50	300	300	150	3
CTE2.150.154.50	300	300	150	2
CTE2.50.204.50	300	300	50	2
CTE2.50.204.50	300	300	50	2
CTE2.150.204.50	300	300	150	3
CTE2.150.204.50	300	300	150	2



Retaining walls





RETAINING WALLS

Our retaining walls are the perfect solution for separating lawns, borders and paths. They can also be used as planters. Retaining walls create a strong structural impact in gardens and outdoor spaces.

OPTIONS



CUSTOM MADE

TOP EDGE:

Our retaining walls always have a double folded top edge, this prevents the wall of bulging and ensures a tight connection.

STANDARD TOP EDGES:

- 50 x 25
- 70 x 30
- 90 x 40 mm
- 120 x 40

BASE PLATE:

As a standard our retaining walls have a wide base plate. This helps the elements to be stable even when not fastened. In addition it ensures that the walls do not have to form a closed system.

HEIGHT:

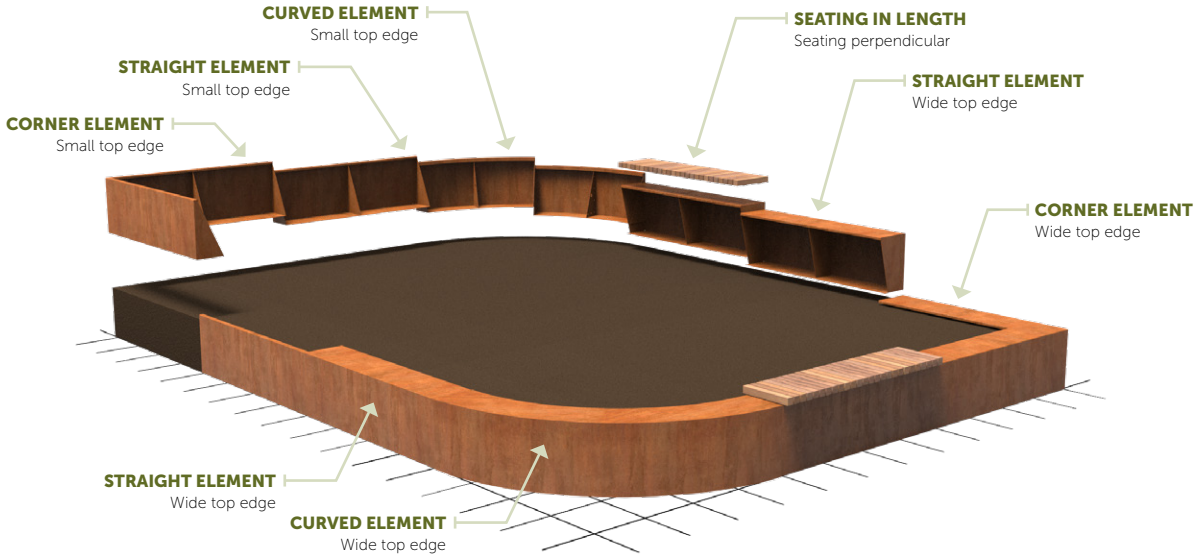
Corten steel: 200 - 1000 mm
Aluminum: 200 - 1000 mm

GROUND LEVEL:

The base plate should be below ground level, this prevents the retaining wall from moving. If the retaining walls are not placed below ground level, they must be secured to the substrate.

FOUNDATION:

Our retaining walls always need to be supported by a levelled and bearing capable ground. When this is not the case, it will be visible in the connections and the straightness of the lines.





Corten steel

Our retaining walls offer almost limitless possibilities for creating shape and form. We always have a variety of sizes, angles and curves in stock. The prefabricated, modular system makes it easy to invisibly join retaining wall elements together.

The orange-brown patina on the metal contributes to the bold, warm look of this retaining wall. The colour is the result of a natural layer of rust. Another name for corten steel is weathering steel: weather conditions have a positive effect on this retaining wall.

Corten steel is a metal alloy made by adding copper, phosphorus, silicon, nickel and chromium to iron. When exposed to air, the material forms a protective layer of rust. This natural coating prevents further corrosion, extending the life of the retaining wall.



RETAINING WALLS

DESCRIPTION	STANDARD
Top Edge	50 x 25 mm
Material thickness	2-3 mm



STRAIGHT

			KG
CRS2.200.1000	1000	200	6
CRS2.200.1500	1500	200	10
CRS2.200.2000	2000	200	12
CRS2.300.1000	1000	300	9
CRS2.300.1500	1500	300	14
CRS2.300.2000	2000	300	18
CRS3.400.1000	1000	400	17
CRS3.400.1500	1500	400	26
CRS3.400.2000	2000	400	34
CRS3.600.1000	1000	600	26
CRS3.600.1500	1500	600	39
CRS3.600.2000	2000	600	50

INSIDE CORNER

			KG
CRSN2.200.500	500	200	6
CRSN2.200.1000	1000	200	11
CRSN2.300.500	500	300	9
CRSN2.300.1000	1000	300	16
CRSN3.400.500	500	400	16
CRSN3.400.1000	1000	400	30
CRSN3.600.500	500	600	24
CRSN3.600.1000	1000	600	44

OUTSIDE CORNER

			KG
CRSO2.200.500	500	200	6
CRSO2.200.1000	1000	200	11
CRSO2.300.500	500	300	8
CRSO2.300.1000	1000	300	15
CRSO3.400.500	500	400	16
CRSO3.400.1000	1000	400	29
CRSO3.600.500	500	600	22
CRSO3.600.1000	1000	600	42

INSIDE CURVE

			KG
CRCN2.200.500	500	200	5
CRCN2.200.1000	1000	200	9
CRCN2.200.1500	1500	200	13
CRCN2.200.2000	2000	200	17
CRCN2.300.500	500	300	7
CRCN2.300.1000	1000	300	13
CRCN2.300.1500	1500	300	19
CRCN2.300.2000	2000	300	25
CRCN3.400.500	500	400	13
CRCN3.400.1000	1000	400	24
CRCN3.400.1500	1500	400	36
CRCN3.400.2000	2000	400	47
CRCN3.600.500	500	600	20
CRCN3.600.1000	1000	600	37
CRCN3.600.1500	1500	600	54
CRCN3.600.2000	2000	600	70

OUTSIDE CURVE

			KG
CRCO2.200.500	500	200	4
CRCO2.200.1000	1000	200	9
CRCO2.200.1500	1500	200	13
CRCO2.200.2000	2000	200	17
CRCO2.300.500	500	300	6
CRCO2.300.1000	1000	300	13
CRCO2.300.1500	1500	300	19
CRCO2.300.2000	2000	300	24
CRCO3.400.500	500	400	12
CRCO3.400.1000	1000	400	23
CRCO3.400.1500	1500	400	35
CRCO3.400.2000	2000	400	46
CRCO3.600.500	500	600	18
CRCO3.600.1000	1000	600	35
CRCO3.600.1500	1500	600	52
CRCO3.600.2000	2000	600	68



RETAINING WALLS WIDE TOP EDGE

DESCRIPTION	STANDARD
Top Edge	400 x 40 mm
Material thickness	3 mm



STRAIGHT

			KG
CRS3.600.1000.400	1000	600	40
CRS3.600.1500.400	1500	600	60
CRS3.600.2000.400	2000	600	81

INSIDE CORNER

			KG
CRSN3.600.1000.400	1000	600	84

OUTSIDE CORNER

			KG
CRSO3.600.1000.400	1000	600	65

INSIDE CURVE

			KG
CRCN3.600.1000.400	1000	600	61
CRCN3.600.1500.400	1500	600	91
CRCN3.600.2000.400	2000	600	122

OUTSIDE CURVE

			KG
CRCO3.600.1000.400	1000	600	53
CRCO3.600.1500.400	1500	600	79
CRCO3.600.2000.400	2000	600	114



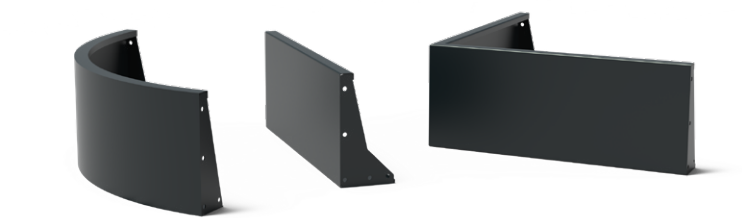


Aluminium

Our retaining walls offer almost limitless possibilities for creating shape and form. We always have a variety of sizes, angles and curves in stock. The prefabricated, modular system makes it easy to invisibly join retaining wall elements together.

Aluminium is corrosion resistant and is available in several colours. It can be left outside all year round without damage, even in freezing temperatures, so you can enjoy this product for many years.

Once constructed, the aluminium retaining wall is given several finishing treatments. The metal is roughened to allow better adhesion of the powder coating. This powder coating is available in a variety of colours and is applied with a strong adhesive primer. Finally, the retaining wall is finished with a hard topcoat. This ensures that the retaining wall is scratch resistant.



RETAINING WALLS

DESCRIPTION	STANDARD
Top Edge	50 x 25 mm
Material thickness	2-3 mm



STRAIGHT

			KG
ARS3.200.1000	1000	200	3
ARS3.200.1500	1500	200	5
ARS3.200.2000	2000	200	6
ARS3.300.1000	1000	300	5
ARS3.300.1500	1500	300	7
ARS3.300.2000	2000	300	9
ARS4.400.1000	1000	400	8
ARS4.400.1500	1500	400	12
ARS4.400.2000	2000	400	15
ARS4.600.1000	1000	600	12
ARS4.600.1500	1500	600	18
ARS4.600.2000	2000	600	23

INSIDE CORNER

			KG
ARSN3.200.500	500	200	3
ARSN3.200.1000	1000	200	6
ARSN3.300.500	500	300	4
ARSN3.300.1000	1000	300	8
ARSN4.400.500	500	400	7
ARSN4.400.1000	1000	400	14
ARSN4.600.500	500	600	11
ARSN4.600.1000	1000	600	20

OUTSIDE CORNER

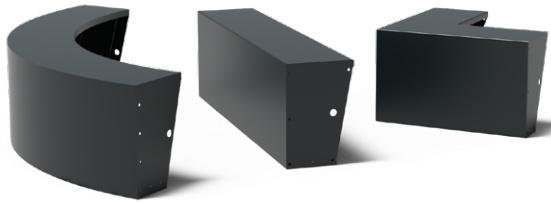
			KG
ARSO3.200.500	500	200	3
ARSO3.200.1000	1000	200	6
ARSO3.300.500	500	300	4
ARSO3.300.1000	1000	300	8
ARSO4.400.500	500	400	7
ARSO4.400.1000	1000	400	13
ARSO4.600.500	500	600	10
ARSO4.600.1000	1000	600	19

INSIDE CURVE

			KG
ARC3.200.500	500	200	2
ARC3.200.1000	1000	200	5
ARC3.200.1500	1500	200	7
ARC3.200.2000	2000	200	9
ARC3.300.500	500	300	3
ARC3.300.1000	1000	300	7
ARC3.300.1500	1500	300	10
ARC3.300.2000	2000	300	13
ARC4.400.500	500	400	6
ARC4.400.1000	1000	400	11
ARC4.400.1500	1500	400	17
ARC4.400.2000	2000	400	22
ARC4.600.500	500	600	9
ARC4.600.1000	1000	600	17
ARC4.600.1500	1500	600	25
ARC4.600.2000	2000	600	33

OUTSIDE CURVE

			KG
ARCO3.200.500	500	200	2
ARCO3.200.1000	1000	200	4
ARCO3.200.1500	1500	200	7
ARCO3.200.2000	2000	200	9
ARCO3.300.500	500	300	3
ARCO3.300.1000	1000	300	6
ARCO3.300.1500	1500	300	10
ARCO3.300.2000	2000	300	13
ARCO4.400.500	500	400	5
ARCO4.400.1000	1000	400	11
ARCO4.400.1500	1500	400	16
ARCO4.400.2000	2000	400	21
ARCO4.600.500	500	600	8
ARCO4.600.1000	1000	600	16
ARCO4.600.1500	1500	600	24
ARCO4.600.2000	2000	600	32





RETAINING WALLS WIDE TOP EDGE



DESCRIPTION	STANDARD
Top edge	400 x 40 mm
Material thickness	3 mm





STRAIGHT

			KG
ARS4.600.1000.400	1000	600	19
ARS4.600.1500.400	1500	600	28
ARS4.600.2000.400	2000	600	38



INSIDE CORNER

			KG
ARSN4.600.1000.400	1000	600	39


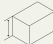
OUTSIDE CORNER

			KG
ARSO4.600.1000.400	1000	600	30

INSIDE CURVE

			KG
ARCN4.600.1000.400	1000	600	30
ARCN4.600.1500.400	1500	600	42
ARCN4.600.2000.400	2000	600	53

OUTSIDE CURVE

			KG
ARCO4.600.1000.400	1000	600	24
ARCO4.600.1500.400	1500	600	35
ARCO4.600.2000.400	2000	600	49





RETAINING WALL SEAT

Easily transform your retaining wall into a seating area with our hardwood seat. Our retaining walls are the perfect solution for separating lawns, borders and paths. They can also be used as planters and, of course, as additional seating.

OPTIONS



CUSTOM MADE

Hardwood

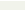
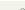
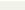
We stock two different types of seats. Both types are available in four sizes. The seats are made of durability class two Garapa hardwood. They are pre-mounted on galvanised steel strips, making the seats simple to install on existing retaining walls. The seat can be fixed to our retaining wall with seating edge to create additional seating in gardens and outdoor spaces.

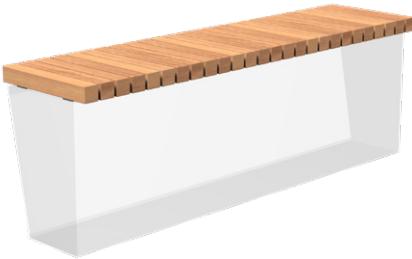


SEATING IN LENGTH

DESCRIPTION	STANDARD
Beam size	40 x 60 mm - 40 x 90 mm
Seating	Garapa
Fixing strip	Galvanized steel
Accessories	Stainless steel



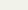
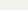
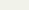
				KG
RS.BL.500	500	500	46	10
RS.BL.1000	1000	500	46	18
RS.BL.1500	1500	500	46	26
RS.BL.2000	2000	500	46	35



SEATING PERPENDICULAR

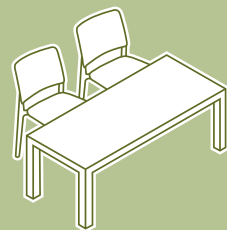
DESCRIPTION	STANDARD
Beam size	65 x 65 mm
Seating	Garapa
Fixing strip	Galvanized steel
Accessories	Stainless steel



				KG
RS.BS.500	450	500	72	13
RS.BS.1000	1000	500	72	29
RS.BS.1500	1500	500	72	43
RS.BS.2000	2000	500	72	59



Furniture





SOLID TABLE

The table has a solid, closed base that continues seamlessly into the tabletop, giving it a modern, sophisticated appeal. The SOLID has built-in reinforcement, eliminating the need for a central support bar. This table can also be used in indoor spaces, such as libraries and meeting rooms.

SOLID BENCH

The SOLID bench completes our SOLID series. Like the table, the bench has a simple, bold design, with the solid, closed base continuing seamlessly into the seat. Even more comfortable when combined with our cushions!





Aluminium

The SOLID table has a bold, sleek appearance, which is enhanced by the closed sides. The sleek design will complement our other garden furniture, such as the SOLID bench. Our aluminium furniture is light, strong, hard-wearing and corrosion resistant.

Once constructed, the furniture is powder coated with a strong adhesive primer. It is then finished with a scratch-resistant colour coating. This coating is available in several standard RAL colours.



SOLID

DESCRIPTION	STANDARD
Material thickness	4 mm
Height to bottom table	650 mm
Adjustable feet	Yes

				KG
TBB400	4000	1000	750	119
TBB300	3000	1000	750	99
TBB260	2600	1000	750	92



SOLID

DESCRIPTION	STANDARD
Material thickness	4 mm
Adjustable feet	Yes

				KG
TBC45	450	400	440	11
TBC105	1050	400	440	14

PILLOWS

				KG
KTCB45	450	400	50	3
KTCB105	1050	400	50	5



BORRA TABLE

This cubism-inspired table is available with an aluminium tabletop only. The BORRA, in contrast to the SOLID, allows a chair to be placed at the short end. This table will also look attractive in indoor public spaces.





Aluminium with oak legs

In this bold, clean, minimalist design, the tabletop flows smoothly into the legs. These legs are made of hardwood. Our aluminium furniture is light, strong, hard-wearing and corrosion resistant.

Once constructed, the furniture is powder coated with a strong adhesive primer. It is then finished with a scratch-resistant colour coating. This coating is available in several standard RAL colours.

Aluminium

Our BORRA table has a bold, clean, minimalist design, in which the tabletop flows smoothly into the legs. The minimalist design makes the table easy to combine with our other garden furniture. Our aluminium furniture is light, strong, hard-wearing and corrosion resistant.

Once constructed, the furniture is powder coated with a strong adhesive primer. It is then finished with a scratch-resistant colour coating. This coating is available in several standard RAL colours.



BORRA

DESCRIPTION	STANDARD
Material thickness	4 mm
Height to bottom table	650 mm
Adjustable feet	Yes

				KG
TBW400	4000	1000	750	102
TBW300	3000	1000	750	83
TBW260	2600	1000	750	76



BORRA

DESCRIPTION	STANDARD
Material thickness	4 mm
Height to bottom table	650 mm
Adjustable feet	Yes

				KG
TBA400	4000	1000	750	86
TBA300	3000	1000	750	68
TBA260	2600	1000	750	61



COLLA

The stylish splayed legs of the COLLA table are made of wood for a natural look. This table has a slimmer tabletop when compared to the SOLID and the BORRA, giving it a chic appearance.





Aluminium

When designing the COLLA table, we chose a sophisticated combination of a hardwood frame and a tabletop constructed from thick aluminium. The result is a unique and timeless table. The aluminium table is corrosion resistant.

Once constructed, the furniture is powder coated with a strong adhesive primer. It is then finished with a scratch-resistant colour coating. This coating is available in several standard RAL colours.



COLLA

DESCRIPTION	STANDARD
Material thickness	4 mm
Height to bottom table	680 mm
Adjustable feet	Yes

				KG
TC400	4000	1000	750	144
TC300	3000	1000	750	117
TC260	2600	1000	750	107



ROLLO

This table creates a cosy, intimate atmosphere in any outdoor space. The ROLLO has a solid steel frame and a fibreglass tabletop. The cleverly designed base allows you to place chairs anywhere around the table.

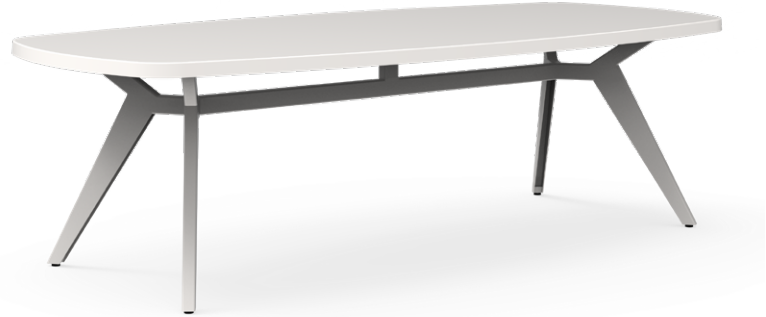




Fibreglass and coated steel

Our collection would not be complete without a round table! With its minimalist lines, the ROLLO table is the perfect fit for any garden. This tabletop is made of high-quality reinforced fibreglass . This reinforcement is extended into the corners of the product, which prevents cracks and tears.

All our fibreglass furniture is made with adjustable feet, so it will always be level and stable, even on uneven ground. The fibreglass is dyed through, and the furniture will retain its colour. The ROLLO table is available in RAL colour 9016 as standard.



ROLLO

DESCRIPTION	STANDARD
Material thickness	3-5 mm
Height to bottom table	710 mm
Adjustable feet	Yes

				KG
ROLXL	2600	1200	760	65



ROLLO

DESCRIPTION	STANDARD
Material thickness	3-5 mm
Height to bottom table	710 mm
Adjustable feet	Yes

			KG
ROL1600	1600	760	75
ROL1400	1400	760	110



O2S

The O2S is one of our original trendsetters. This stylish lounge furniture is made of fibreglass and is available in a variety of colours. It offers the ultimate in comfort and relaxation for a sunny corner or next to the pool.





Fibreglass

The O2S chair stands out with its luxurious, timeless and refined look. Turn a seating area into a tranquil space with this chair. Its design is reflected in the entire O2S range, resulting in a harmonious, coordinated collection. The chair is made of high-quality reinforced fibreglass . This reinforcement is extended into the corners of the product, which prevents cracks and tears from forming. The armrests are made of teak hardwood as standard.

All our fibreglass furniture is made with adjustable feet, so it will always be level and stable, even on uneven ground. The fibreglass is dyed through, and the furniture will retain its colour. The O2S chair is available in RAL colour 9016 as standard.



O2S

DESCRIPTION	STANDARD
Material thickness	min. 3 mm
Adjustable feet	Yes

				KG
TO400	4000	1050	780	80
TO300	3000	1050	780	65
TO230	2300	1050	780	60



O2S

DESCRIPTION	STANDARD
Material thickness	3 mm
Adjustable feet	Yes

				KG
TOB45	400	360	470	6
TOB120	1160	385	470	10
TOB160	1600	385	470	12
TOB200	2000	385	470	15

PILLOWS

				KG
KTOB45	450	400	50	3
KTOB120	1200	400	50	4
KTOB160	1600	400	50	6
KTOB200	2000	400	50	7



O2S

DESCRIPTION	STANDARD
Material thickness	3 mm
Adjustable feet	Yes

				KG
S001	700	830	745	12

PILLOWS

				KG
KS001	500	700	50	2



O2S

DESCRIPTION	STANDARD
Material thickness	3 mm
Adjustable feet	Yes

				KG
H011	855	600	360	10

PILLOWS

				KG
KH011	800	550	50	3



O2S

DESCRIPTION	STANDARD
Material thickness	3 mm
Adjustable feet	Yes

				KG
B004	1650	840	755	30

PILLOWS

				KG
KB004	1600	700	50	4



O2S

DESCRIPTION	STANDARD
Material thickness	3 mm
Adjustable feet	Yes

				KG
P008	440	440	280	6



O2S

DESCRIPTION	STANDARD
Material thickness	min. 3 mm
Adjustable feet	Yes

				KG
HTO210	2100	910	1090	60



O2S

DESCRIPTION	STANDARD
Material thickness	3 mm
Adjustable feet	Yes

				KG
LT165	1600	700	270	20
LT70	700	700	270	9



O2S

DESCRIPTION	STANDARD
Material thickness	min. 3 mm
Adjustable feet	Yes

				KG
SL020	2090	900	345	25

PILLOWS

				KG
KSL020	1900	700	80	10



O2S

DESCRIPTION	STANDARD
Material thickness	3 mm
Adjustable feet	Yes

				KG
SL020	2090	900	345	25

PILLOWS

				KG
KSL030	1900	700	80	10



SPHERE LOUNGER

The SPHERE is designed to offer the ultimate in relaxation. You can completely unwind in this spacious, almost otherworldly chair!

Fibreglass

Our iconic SPHERE Lounger is a wonderful addition to any garden. This easy chair is made of high-quality fibreglass , making it able to withstand all types of weather. The cushions and custom rain cover can be ordered separately.

The SPHERE Lounger is made of high-quality reinforced fibreglass . This reinforcement is extended into the corners of the product, which prevents cracks and tears from forming. Available in RAL colour 9016 as standard.



SPHERE

DESCRIPTION	STANDARD
Material thickness	3 mm
Fabric cushions	Sunbrella

			KG
Sphere	1400	700	50



GARDEN BOX

The garden box is the ideal way to store your cushions safely outside. This stylish cushion box will look great when combined with items in the BORRA or SOLID collections. The box is only available in aluminium. However, it can be supplied in a range of colours.

Aluminium

Our garden box is the perfect, stylish storage box for all garden items. The box is beautifully designed and can be finished in almost any RAL colour, making this garden storage box easy to combine with other garden furniture.

The garden box is made of strong, low-maintenance aluminium. Once constructed, the box is powder coated with a strong adhesive primer. It is then finished with a scratch-resistant colour coating. The box is easy to open and close thanks to the solid lid construction and gas-spring hinges. An integrated lock ensures that cushions and other items can always be stored securely.



GARDENBOX

DESCRIPTION	STANDARD
Material thickness	3 mm
Lockable	Yes

				KG
STB200	2000	950	750	80
STB160	1580	580	450	38
STB120	1180	580	450	30



SERA
A bold, clean, minimalist design. The simplicity of the SERA chair makes it the perfect complement to all the tables in our collection. This chair will make your garden furniture set complete.

Fibreglass
The SERA chair is made of high-quality fibreglass polypropylene (plastic) and is available in several colours. The SERA chair's simplicity makes it easy to mix and match, and it's also stackable.

Because this chair is made from plastic, it is weatherproof and not affected by moisture. It will not rot or mould when exposed to rain, for example. The material will also not warp in the sun, and since it is UV resistant, it will also not discolour or fade. You will enjoy this product for many years.



SERA

DESCRIPTION	STANDARD
Stackable	Yes

				KG
TOSS016	490	535	795	4



SERA

DESCRIPTION	STANDARD
Stackable	Yes

				KG
TOHSS075	470	510	1000	5

A large, stylized letter 'A' logo in a light olive green color, centered on a white background. The 'A' is composed of two thick, slightly curved lines that meet at the top and bottom, creating a triangular shape. The lines are not perfectly straight, giving it a hand-drawn or organic feel.

Headquarters and showroom: Liessentstraat 4, 5405 AG Uden The Netherlands

Warehouse: Frontstraat 3B, 5405 AK Uden The Netherlands

T. + 31 (0)413 274 168

www.adezz.com info@adezz.com

Edition 2.0, February 2023 English

Subject to change